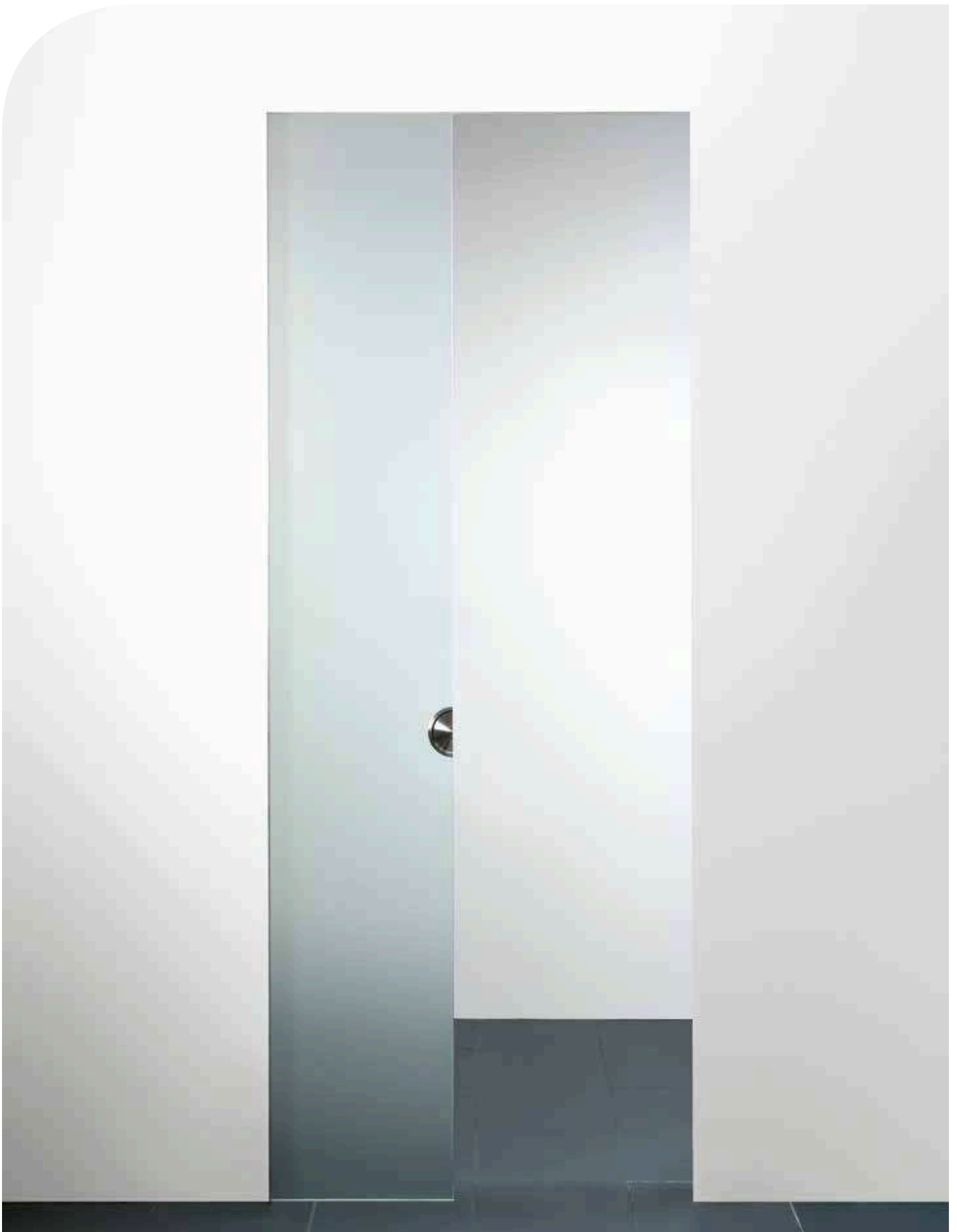


# X5

SCHUIFDEUR GLAS



MAKKELIJK DISTRIBUTIE SYSTEEM  
3 BOX SYSTEEM



## DEURBESLAG: 3 BOX SYSTEEM



STAANDERS



RAIL + DRAAGBALK  
+ BESLAG



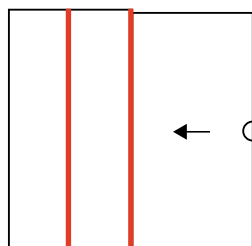
AFWERKING

## TECHNISCHE INFO

| deurdikte      | Xinnix systeem | constructie profieltype | minimum muurdikte | maximum deur afmeting |
|----------------|----------------|-------------------------|-------------------|-----------------------|
| 8 - 10 - 12 mm | <b>X5D</b>     | Ω 50                    | 100 mm            | 🔒 60 kg               |
| 8 - 10 - 12 mm | <b>X5</b>      | Ω 75                    | 100 mm            | 🔒 100 kg              |
| 8 - 10 - 12 mm | <b>X5D</b>     | Ω 75                    | 125 mm            | 🔒 100 kg              |

glazen deur: 2000 x 1000 x 10 = 50 kg

## BOX 1: STAANDERS



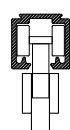
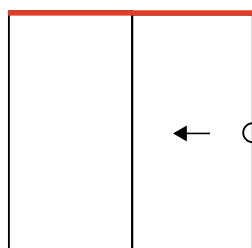
|            | Enkele beplating | Dubbele beplating | MUURDIKTE | X5     | X5D    |
|------------|------------------|-------------------|-----------|--------|--------|
| <b>X5</b>  |                  |                   | Ω 50      | -      | 100 mm |
| <b>X5D</b> |                  |                   | Ω 75      | 100 mm | 125 mm |

Ω → Constructie profieltype

## AFKORTBARE STAANDERS

| Doorgang hoogte | 2000 mm    | 2100 mm    | 2300 mm    | 2700 mm    | 3000 mm    |
|-----------------|------------|------------|------------|------------|------------|
| X5              | X5 - 2000  | X5 - 2100  | -          | -          | -          |
| X5D             | X5D - 2000 | X5D - 2100 | X5D - 2300 | X5D - 2700 | X5D - 3000 |

## BOX 2: RAIL + DRAAGBALK + BESLAG



- Xinnix Selection  
- S-line Hawa

Ω 50 (X5D en Xinnix selection)

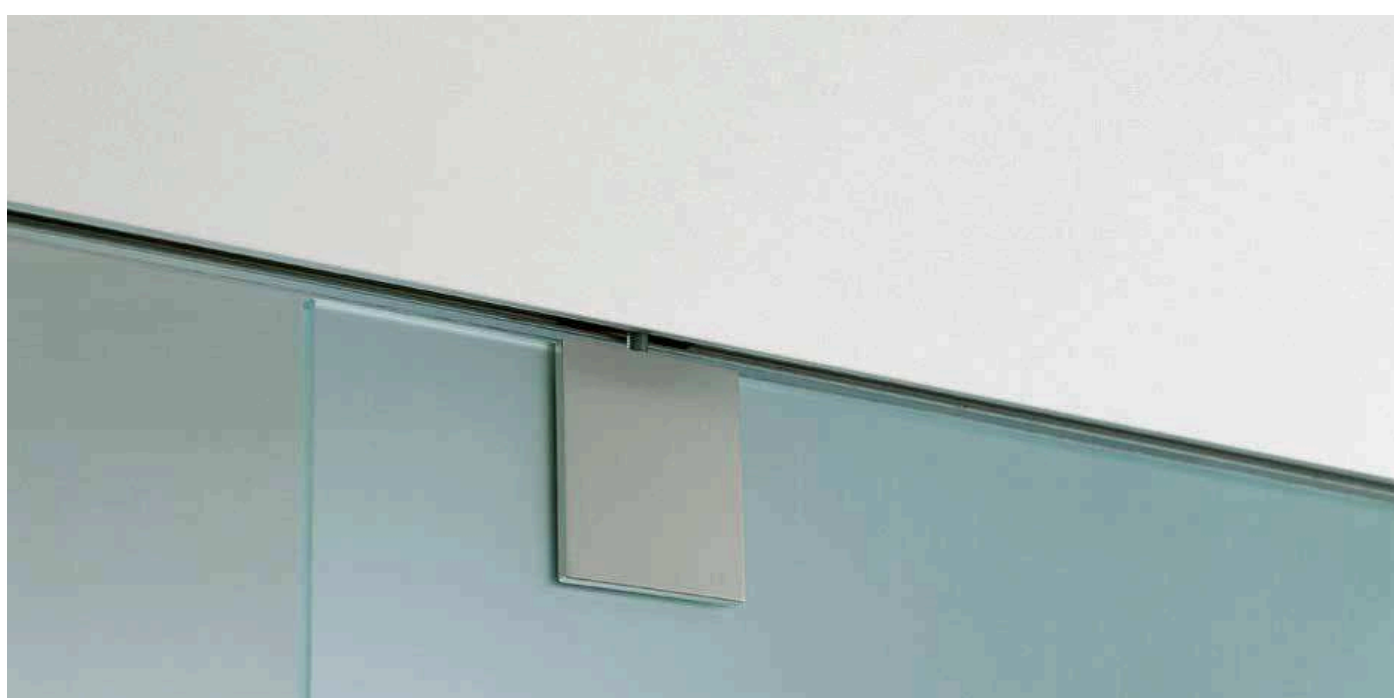


| MUURDIKTE | X5     | X5D    |
|-----------|--------|--------|
| Ω 50      | -      | 100 mm |
| Ω 75      | 100 mm | 125 mm |

| XINNIX SELECTION                   | DOORGANG BREEDTE |                                       | CONSTRUCTIE PROFIELTYPE | STAANDERS       |
|------------------------------------|------------------|---------------------------------------|-------------------------|-----------------|
| X5 - 0830B.50GL<br>X5 - 0830B.75GL | 800 mm           | Vaste deurbreedte 830 mm              | Ω 50<br>Ω 75            | X5D<br>X5 / X5D |
| X5 - 0930B.50GL<br>X5 - 0930B.75GL | 900 mm           | Vaste deurbreedte 930 mm              | Ω 50<br>Ω 75            | X5D<br>X5 / X5D |
| X5 - 1000B.50GL<br>X5 - 1000B.75GL | 500 - 1000 mm    | Afkortbare deurbreedte 530 - 1030 mm  | Ω 50<br>Ω 75            | X5D<br>X5 / X5D |
| X5 - 1200B.75GL                    | 1000 - 1200 mm   | Afkortbare deurbreedte 1030 - 1230 mm | Ω 75                    | X5D             |
| X5 - 1500B.75GL *                  | 1200 - 1500 mm   | Afkortbare deurbreedte 1230 - 1530 mm | Ω 75                    | X5D             |

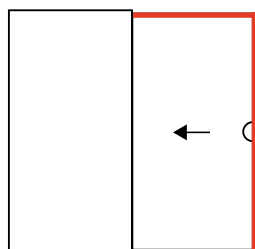
| S-LINE HAWA         | DOORGANG BREEDTE |                                       | CONSTRUCTIE PROFIELTYPE | STAANDERS |
|---------------------|------------------|---------------------------------------|-------------------------|-----------|
| X5 - H 1000B.75GP   | 500 - 1000 mm    | Afkortbare deurbreedte 530 - 1030 mm  | Ω 75                    | X5 / X5D  |
| X5 - H 1200B.75GP   | 1000 - 1200 mm   | Afkortbare deurbreedte 1030 - 1230 mm | Ω 75                    | X5D       |
| X5 - H 1500B.75GP * | 1200 - 1500 mm   | Afkortbare deurbreedte 1230 - 1530 mm | Ω 75                    | X5D       |

\* extra set staanders X5D / XM (zie pag. 65)



HAWA-junior 80/GP

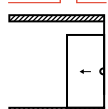
## BOX 3: AFWERKING



| TE VERMELDEN     | XINRIX                                  | PURE                  |
|------------------|---|-----------------------|
| BEPLATING        | X5 - X5D                                | -                     |
| DOORGANG HOOGTE  | 2300 - 2700 - 3000 mm                   | 2300 - 2700 - 3000 mm |
| MUURDIKTE        | 100 - 125 mm                            | 100 - 125 mm          |
| DOORGANG BREEDTE | < 1000 mm (1) *<br>1000 - 2000 mm (2) * | -                     |

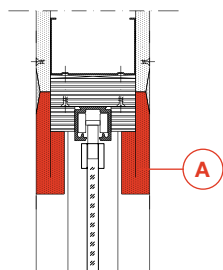
\* aantal afwerkingsprofielen **A**

XINRIX

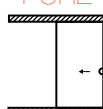


A+B

- Softbrake nog niet verkrijgbaar
- deur tekeningen op aanvraag

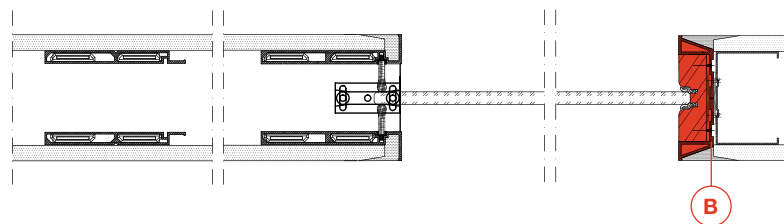
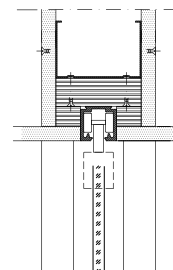


PURE



B

- Softbrake nog niet verkrijgbaar
- deur tekeningen op aanvraag

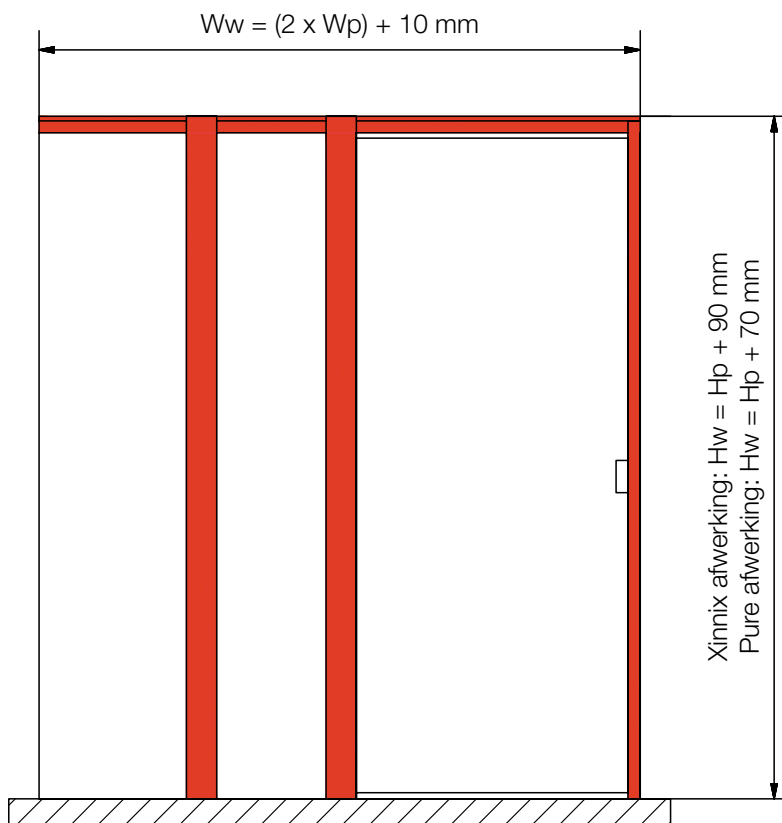


### MUURAFWERKING

- Gipsplaat afwerking 12,5 mm

### KARAKTERISTIEKEN

- Eenvoudige installatie
- Korte levertijd door het DIY-system
- Minimalistisch design



TOEBEHOREN (ZIE PAG. 85-87)