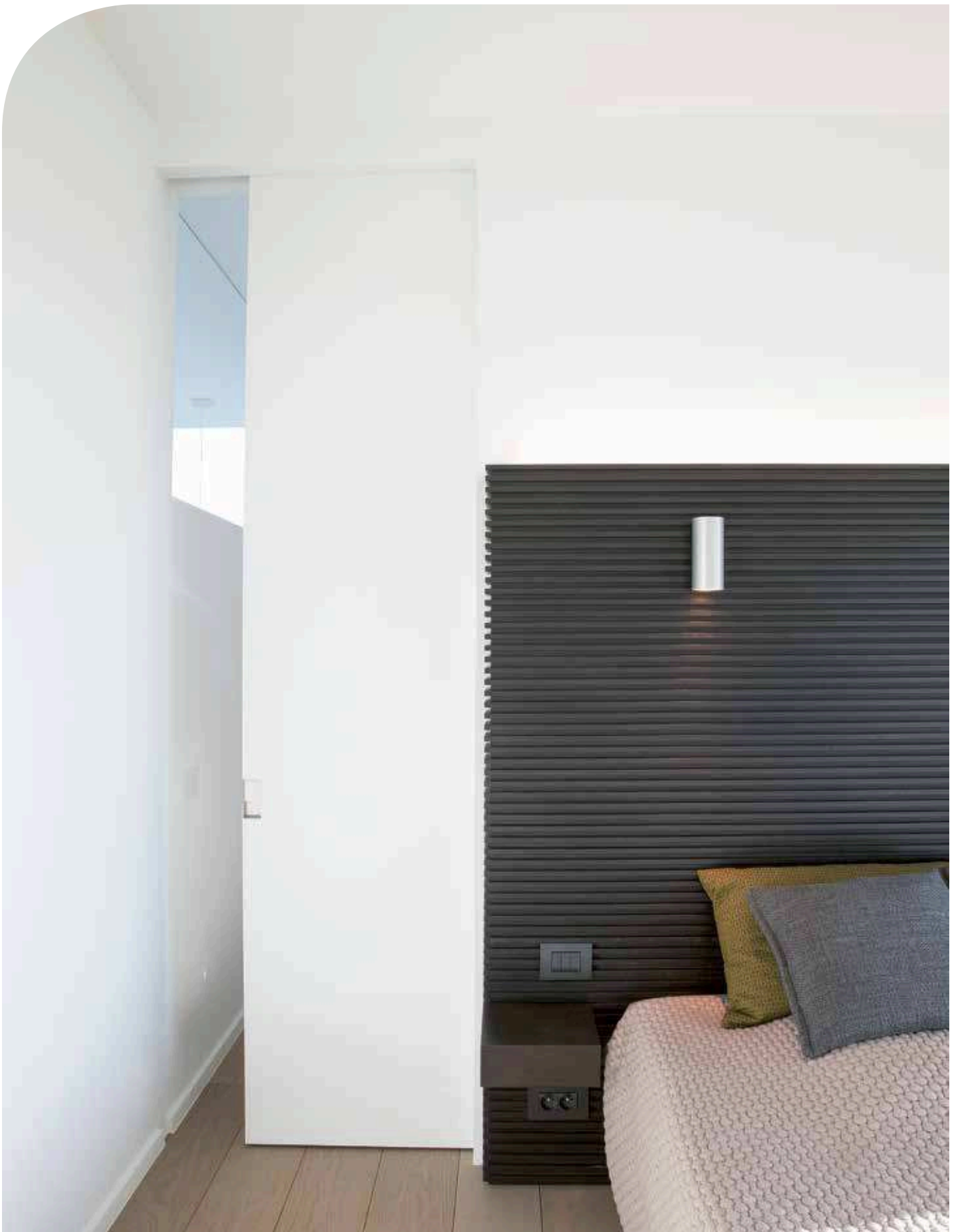


X5

SCHUIFDEUR HOUT



MAKKELIJK DISTRIBUTIE SYSTEEM
3 BOX SYSTEEM



DEURBESLAG: 3 BOX SYSTEEM



STAANDERS



RAIL + DRAAGBALK
+ BESLAG

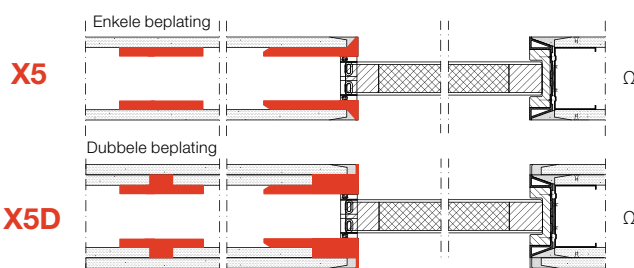
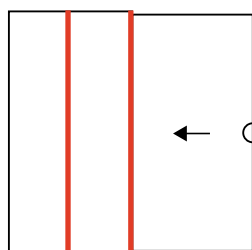


AFWERKING

TECHNISCHE INFO

| deurdikte | Xinnix systeem | constructie profieltype | minimum muurdikte | maximum deur afmeting |
|------------|----------------|-------------------------|-------------------|-----------------------|
| 25 - 40 mm | X5 | Ω 75 | 100 mm | 2100 x 1000 mm |
| 25 - 40 mm | X5D | Ω 75 | 125 mm | 2300 x 1000 mm |
| 40 - 60 mm | X5 | Ω 100 | 125 mm | 2100 x 1000 mm |
| 40 - 60 mm | X5D | Ω 100 | 150 mm | 3000 x 3000 mm |

BOX 1: STAANDERS



| MUURDIKTE | X5 | X5D |
|-----------|--------|--------|
| Ω 75 | 100 mm | 125 mm |
| Ω 100 | 125 mm | 150 mm |

Ω → Constructie profieltype

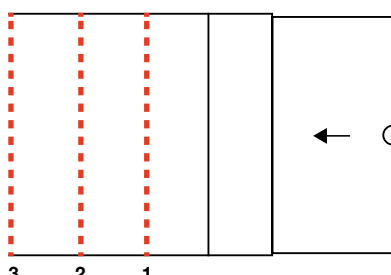
VASTE STAANDERS VOOR DEURPANELEN Hp

| HP | 1972 mm | 2040 mm |
|-----|------------|------------|
| X5 | X5 - 1972 | X5 - 2040 |
| X5D | X5D - 1972 | X5D - 2040 |

AFKORTBARE STAANDERS

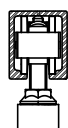
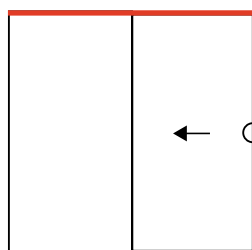
| Doorgang hoogte | 2000 mm | 2100 mm | 2300 mm | 2700 mm | 3000 mm |
|-----------------|------------|------------|------------|------------|------------|
| Hp max. | 2015 mm | 2115 mm | 2315 mm | 2715 mm | 3015 mm |
| X5 | X5 - 2000 | X5 - 2100 | - | - | - |
| X5D | X5D - 2000 | X5D - 2100 | X5D - 2300 | X5D - 2700 | X5D - 3000 |

EXTRA SET STAANDERS X5D/XM



| X5D / XM | Doorgang breedte |
|----------|------------------|
| 1 | 1201 - 1800 mm |
| 2 | 1801 - 2400 mm |
| 3 | 2401 - 3000 mm |

BOX 2: RAIL + DRAAGBALK + BESLAG



- Xinnix Selection
- S-line Hawa



Ω 75
Ω 100

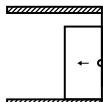
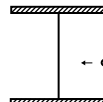
| MUURDIKTE | X5 | X5D |
|-----------|--------|--------|
| Ω 75 | 100 mm | 125 mm |
| Ω 100 | 125 mm | 150 mm |

| XINNIX SELECTION | DOORGANG BREEDTE | | CONSTRUCTIE PROFIELTYPE | STAANDERS |
|---------------------------------|------------------|---------------------------------------|-------------------------|-----------|
| X5 - 0830B.75 X5 - 0830B.100 | 800 mm | Vaste deurbreedte 830 mm | Ω 75 Ω 100 | X5 / X5D |
| X5 - 0930B.75 X5 - 0930B.100 | 900 mm | Vaste deurbreedte 930 mm | Ω 75 Ω 100 | X5 / X5D |
| X5 - 1000B.75 X5 - 1000B.100 | 500 - 1000 mm | Afkortbare deurbreedte 530 - 1030 mm | Ω 75 Ω 100 | X5 / X5D |
| X5 - 1200B.75 X5 - 1200B.100 | 1000 - 1200 mm | Afkortbare deurbreedte 1030 - 1230 mm | Ω 75 Ω 100 | X5D |
| X5 - 1500B.100 * | 1200 - 1500 mm | Afkortbare deurbreedte 1230 - 1530 mm | Ω 100 | X5D |
| Maatwerk * | 1500 - 3000 mm | deurbreedte: 1530 - 3030 mm | Ω 100 | X5D |

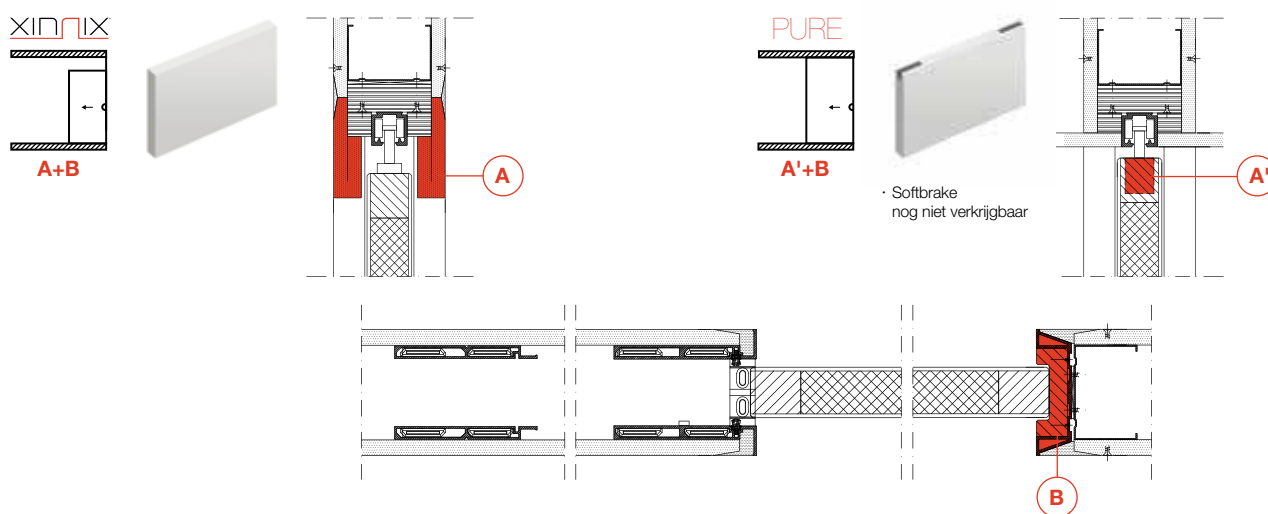
| S-LINE HAWA | DOORGANG BREEDTE | | CONSTRUCTIE PROFIELTYPE | STAANDERS |
|-------------------------------------|------------------|---------------------------------------|-------------------------|-----------|
| X5 - H 1000B.75 X5 - H 1000B.100 | 500 - 1000 mm | Afkortbare deurbreedte 530 - 1030 mm | Ω 75 Ω 100 | X5 / X5D |
| X5 - H 1200B.75 X5 - H 1200B.100 | 1000 - 1200 mm | Afkortbare deurbreedte 1030 - 1230 mm | Ω 75 Ω 100 | X5D |
| X5 - H 1500B.100 * | 1200 - 1500 mm | Afkortbare deurbreedte 1230 - 1530 mm | Ω 100 | X5D |
| Maatwerk * | 1500 - 3000 mm | deurbreedte: 1530 - 3030 mm | Ω 100 | X5D |

* extra set staanders X5D / XM (zie pag. 65)

BOX 3: AFWERKING

| TE VERMELDEN |  XINNIX |  PURE |
|------------------|--|--|
| BEPLATING | X5 - X5D | - |
| DOORGANG HOOGTE | 2300 - 2700 - 3000 mm | 2300 - 2700 - 3000 mm |
| MUURDIKTE | 100 - 125 - 150 mm | 100 - 125 - 150 mm |
| DOORGANG BREEDTE | < 1000 mm (1) * 1000 - 2000 mm (2) * 2000 - 3000 mm (3) * | - |
| TYPE | - | Xinnix selection / S-line Hawa |

* aantal afwerkingsprofielen **A**

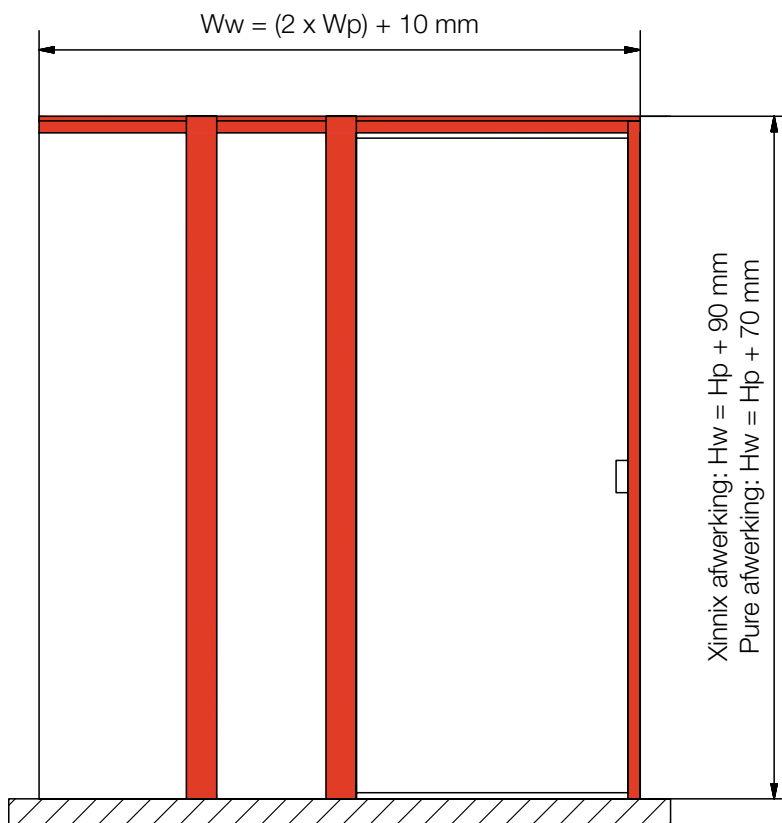


MUURAFWERKING

- Gipsplaat afwerking 12,5 mm

KARAKTERISTIEKEN

- Eenvoudige installatie
- Korte levertijd door het DIY-system
- Minimalistisch design



TOEBEHOREN (ZIE PAG. 85-87)