



International Glass Fittings

STACK MASTER

Shopfrontsystem

January 2013

INDEX

1) GENERAL DESCRIPTION	2
2) COMPONENTS	4
3) TYPE - MODELS - DRAWINGS	5
4) TEXT FOR TENDERS	11

A) PRODUCT DESCRIPTION

The STACKMASTER system is a sliding/stacking **mobile partition walls** solution that can be used for various interior as well for exterior applications.

The panels can be individually guided into a stacking area in order to open up the entire width of the opening.

The stacking area can be situated either to allow panels to be stacked out of sight or to stack panels in an area where there is no hindrance to access.

Top track and molded guiding parts

The well designed top track is an extruded aluminium profile standard available in satin silver anodized finish and on demand available in various anodised and powder coated colors. The track has a channel inside to house a connection piece that connects as well two straight pieces of the track or the track with one of the 3 molded parts in cast aluminum. With the 3 different models of molded parts is it very easy for every installer to design and fabricate the desired stacking arrangement in the work place or even on site.

Hangers

Each panel is equipped with 2 hangers, the maximum weight capacity per panel is 200 kg. The body of the hanger and the connecting bolt are made of zinc plated steel. Each hanger is equipped with 4 rolling wheels and 6 guiding wheels all of them with ball bearings and covered with special noise reducing material.

Glass partition panels

The top and bottom rails can be used for standard tempered glass of 8 mm to 12 mm thick. The aluminum profiles have a special internal clamping system without the need to make any glass cuttings in the panels.

The aluminum door rail is standard available in satin silver anodized finish and on demand available in various anodized and powder coated finishes. They can also be clad with stainless steel covers.

The door rails have been designed with channels at both sides to allow the fitting of **brush draught-proofing strip** and purpose designed plastic end caps to neatly close and finish the profiles.

Integrated 'foot operated' locks, turning knob locks and Euro profile cylinder locks can easily be fitted to the bottom rail to secure the partition panels in the closed position.

A second type of 'foot operated' lock also makes a connection between the panels in closed position.

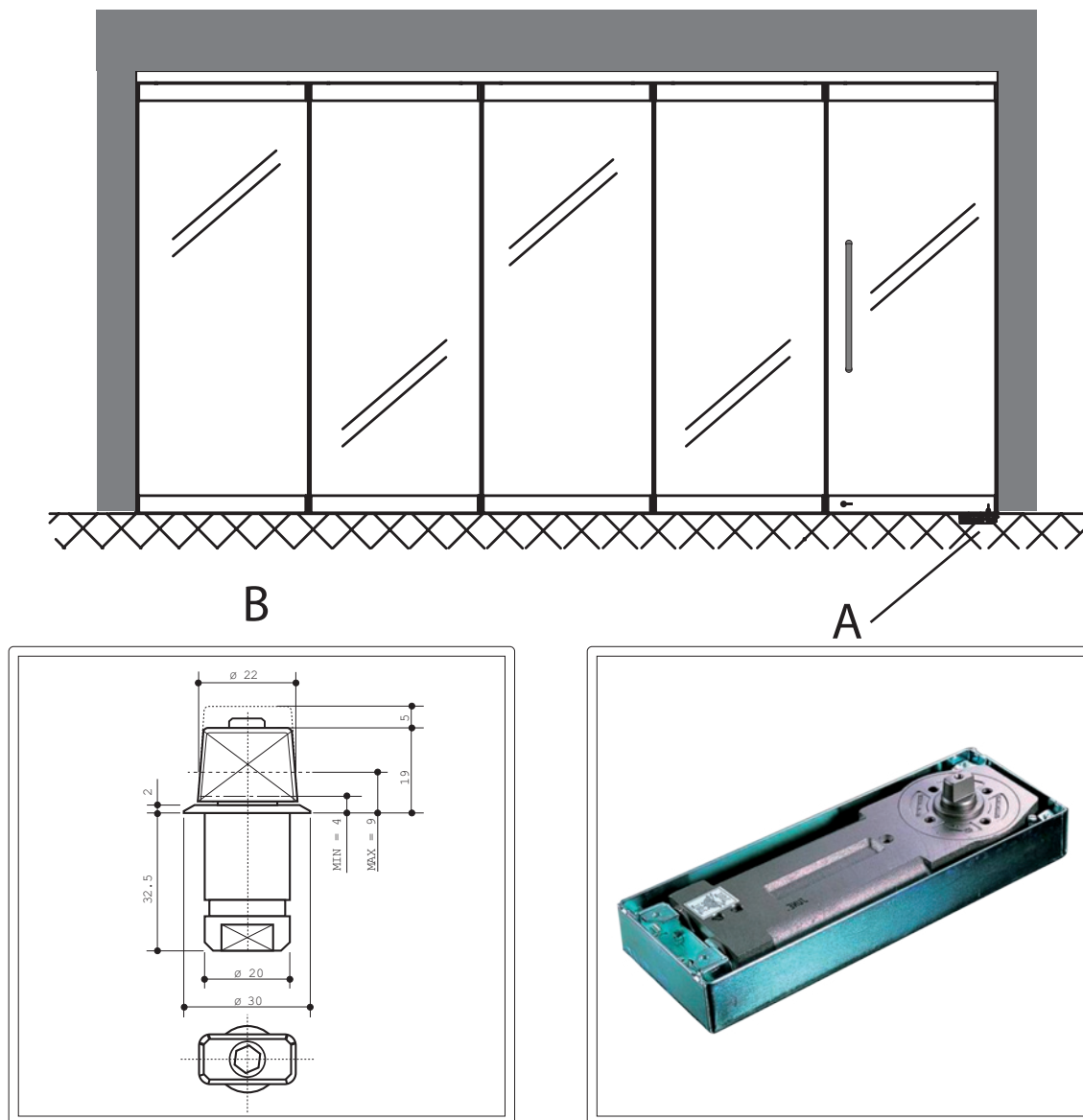
Aluminum brush profiles or self adhesive brushes are used to achieve a seal down the sides of the panels and to protect the edges of the glass whilst moving the doors into the stacking arrangement.

1) Installation Variants

View open / closed



Composition

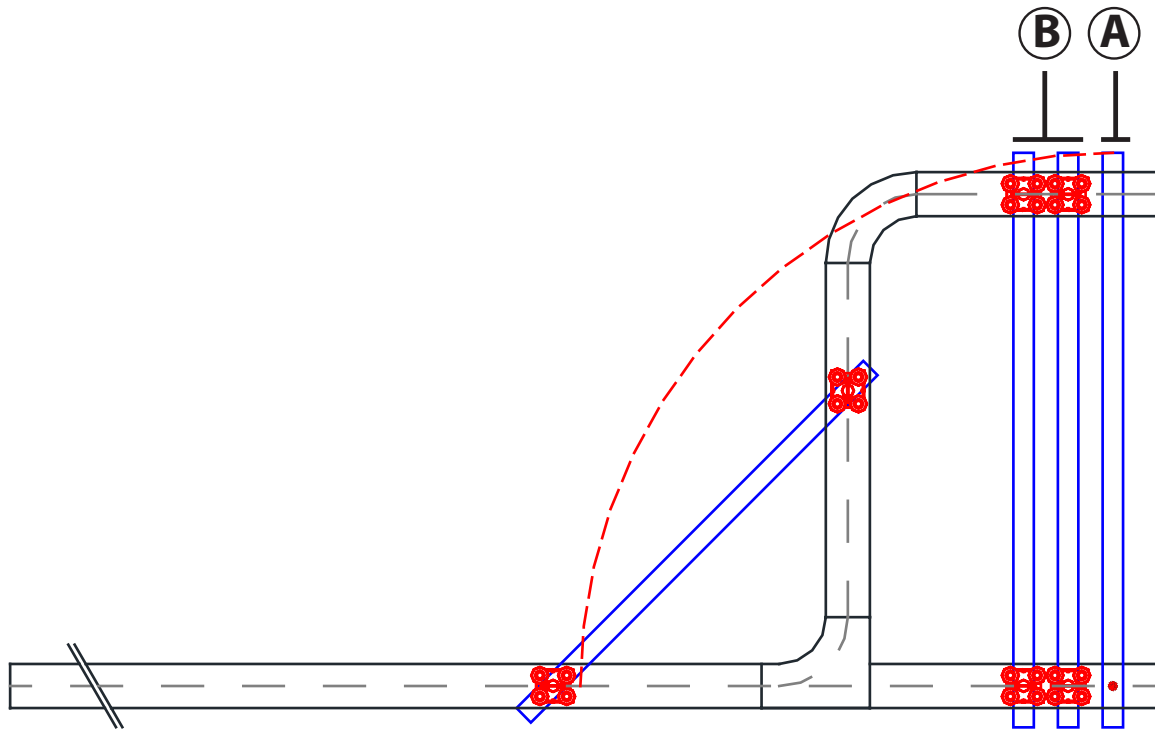


Partition wall in combination with 1 or more swing doors

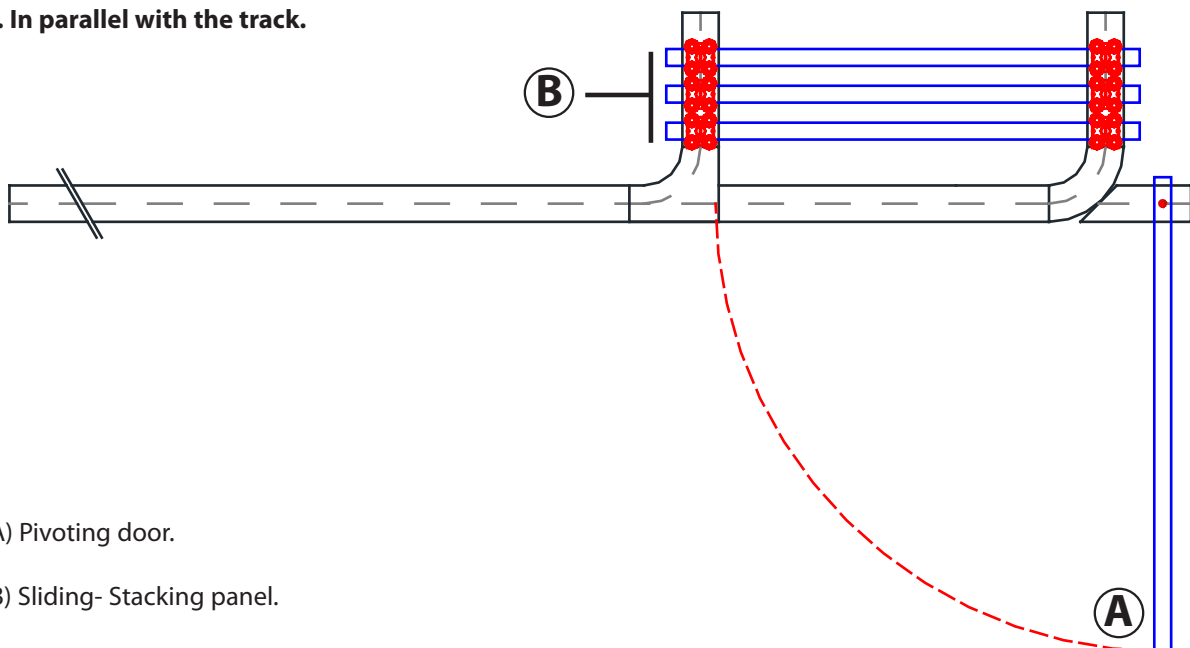
The Stack Master partition wall systems are equipped with a pivoting door under every stacking area. The pivoting door can either be installed on a floor spring **(A)** or on an adjustable floor pivot **(B)**.

TWO MAIN WAYS OF STACKING THE DOORS.

1. Standard at a right angle with the track



2. In parallel with the track.



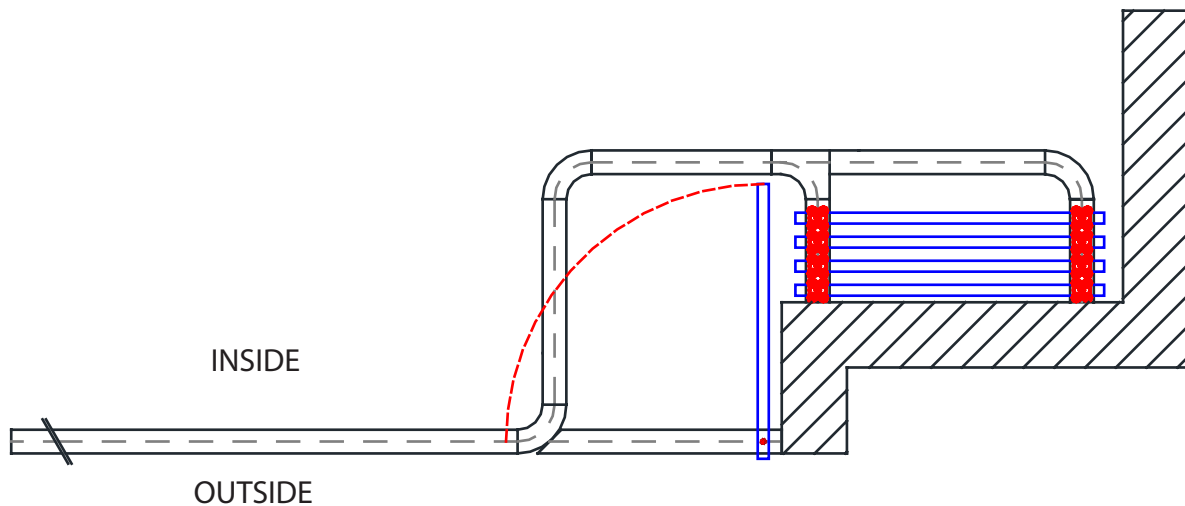
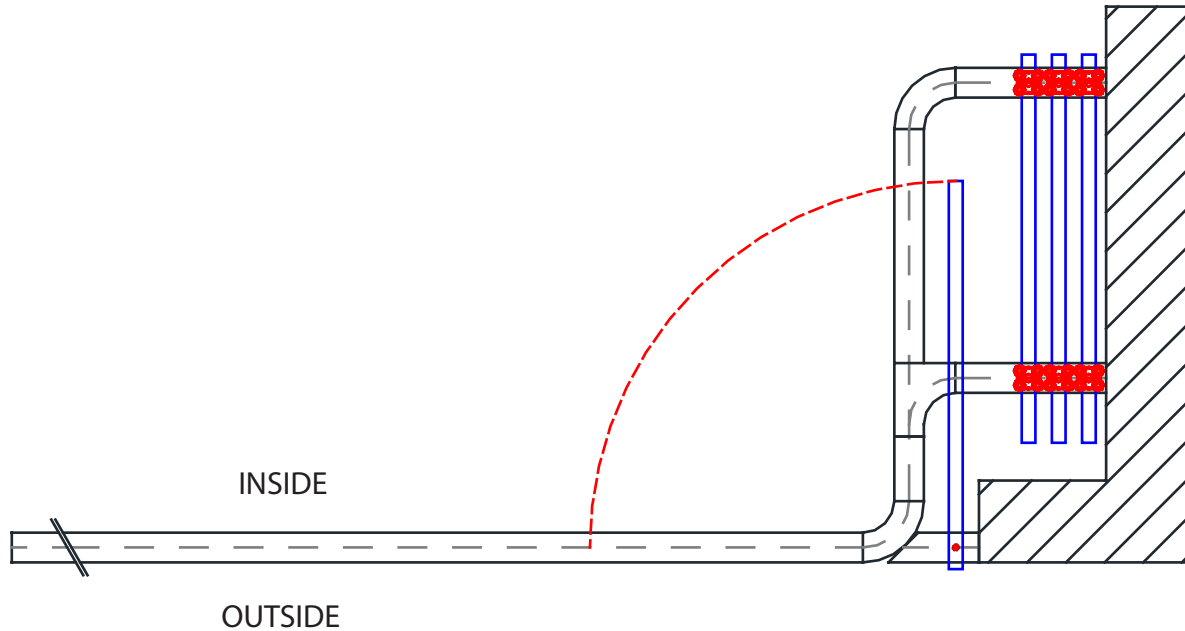
(A) Pivoting door.

(B) Sliding- Stacking panel.

Variants

For both types of stacking arrangements a number of variants are possible.

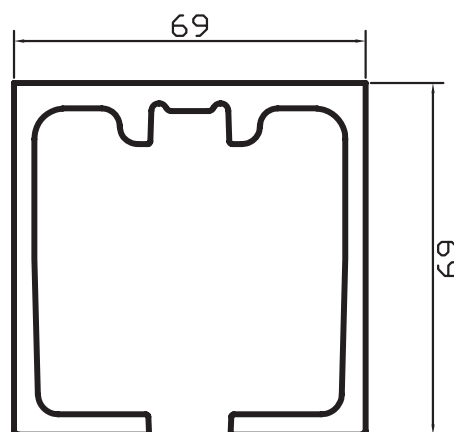
PANELS STACKED BEHIND A WALL,
FIRST PANEL IS A SWING DOOR



B) THE PARTS

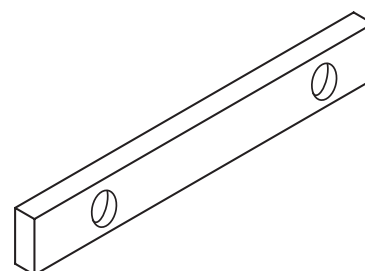
Track profile

SRA01LT Aesthetic design aluminium top track profile, with grooves for inserting the jointing strips FRV01LT-02LT-03LT Heavy extrusion with a maximum capacity of 250 kg/M Ceiling suspension by means of M8 bolts, to be secured every 50 cm. 2 extra channels for brush strip.



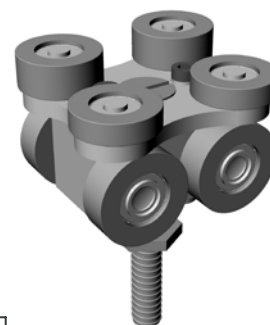
Jointing strips for track

SRV01LT straight jointing strip, stainless steel, to be used for connecting track to track or track to curve of Y conector.

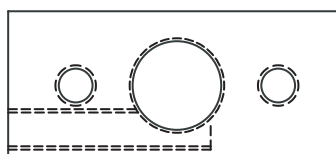


Hanger

SRR02LT Steel aisi body hanger with 4 rolling x 6 guiding wheels nylon coated in noise reducing material. Capacity per hanger : 100 kg. length: 59 mm - width: 60 mm - height: 48 mm - M12 bolt



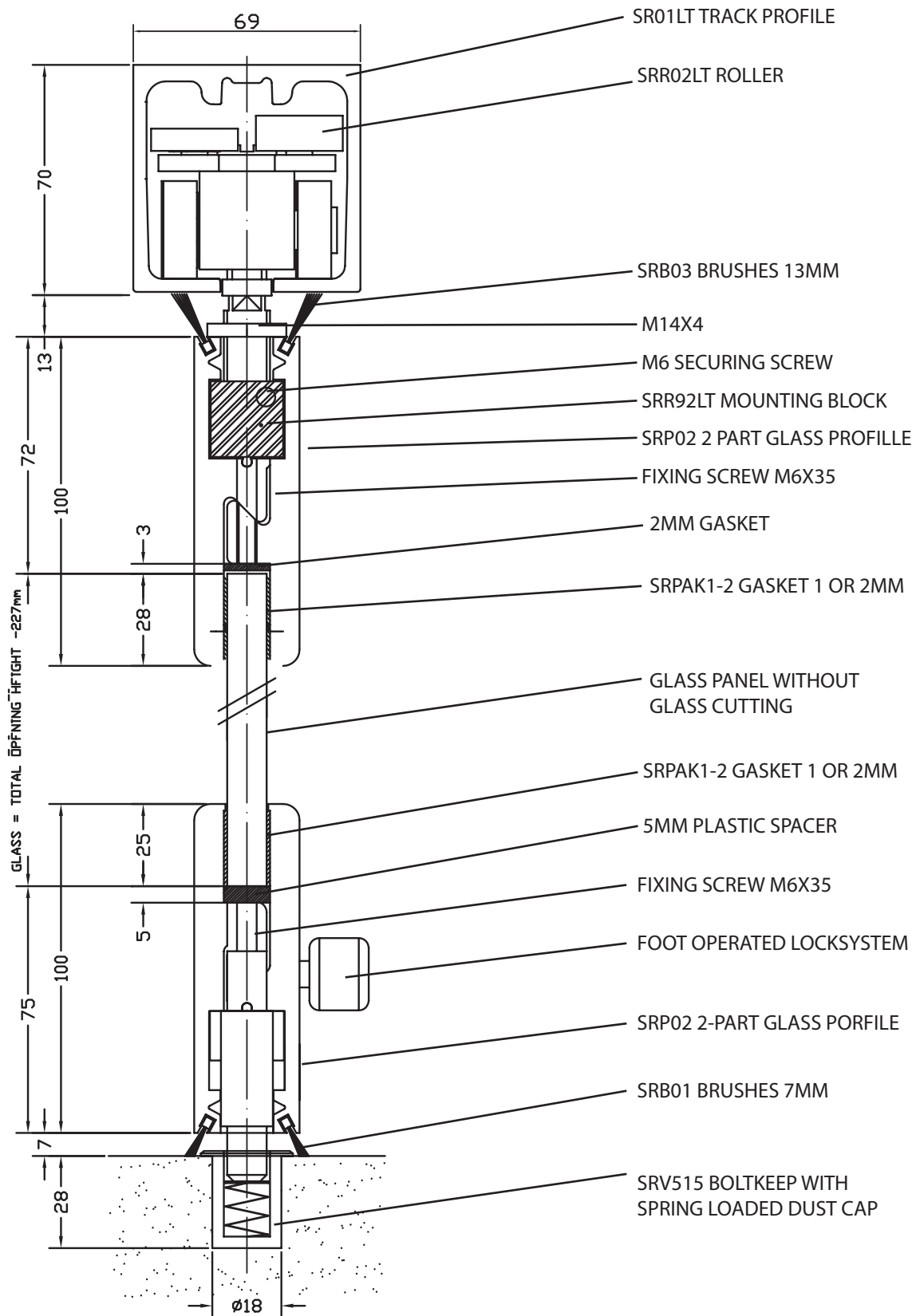
SRR04LT mounting block for hanger length: 50 mm width: 22 mm height: 14 mm



Profiles and accessories

see page 10

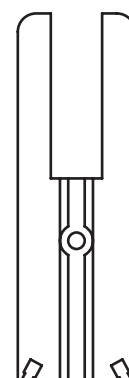
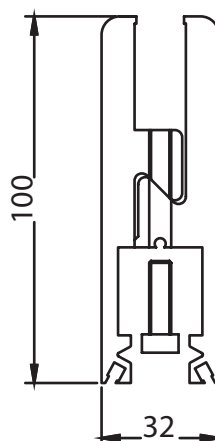
CROSS SECTION STACK MASTER SLIDING/STACKING DOOR



Assembly

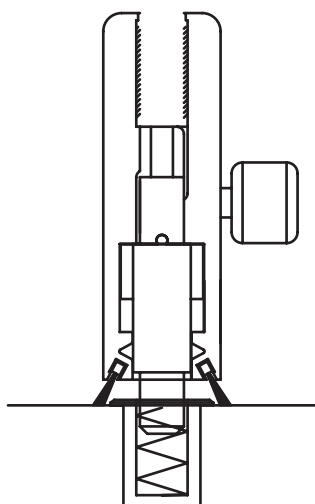
Profile and accessories

SRP02 2-part aluminium profile, to be used at the top as well as at the bottom of the glass panel, the profiles are installed by means of screws M6x35 Tightened by means of a torque wrench with a force of 15 mm. Depending on the thickness of the glass (8,10 or 12 mm). Different thickness of gaskets are used.

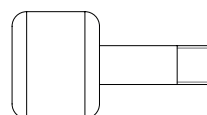


SRE** plastic end cap, is placed at both ends of the profile. This cap features brush strip retention grooves

SRS08 'foot operated' lock system operated from the 'inside', in combination with FRV515



SRS03 Knob for front foot operated locking.



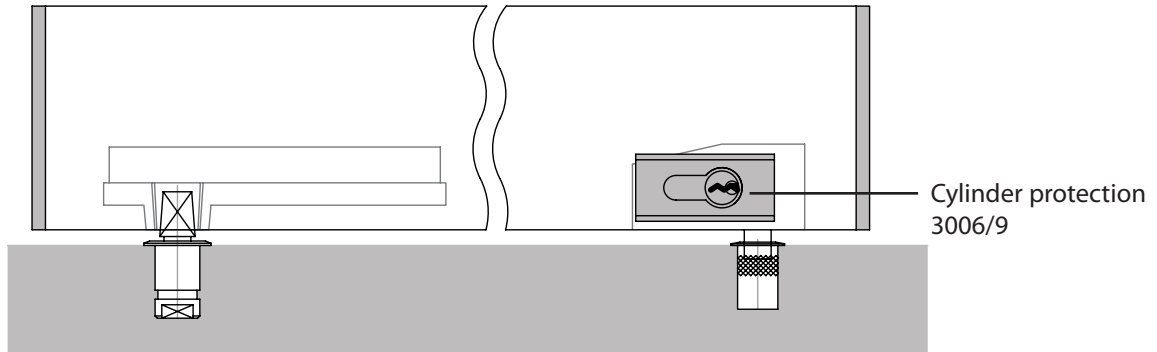
SRS04 Pen for side foot operated locking.



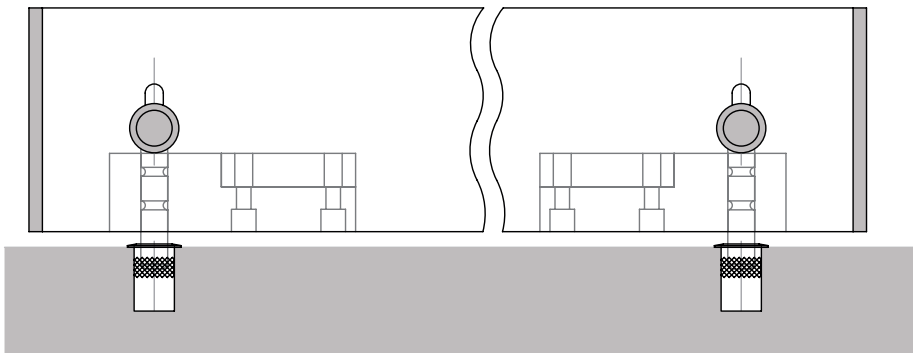
Important: A detailed power point presentation showing how the door rails are installed on to the glass is available on request.

Locking: Different possibilities

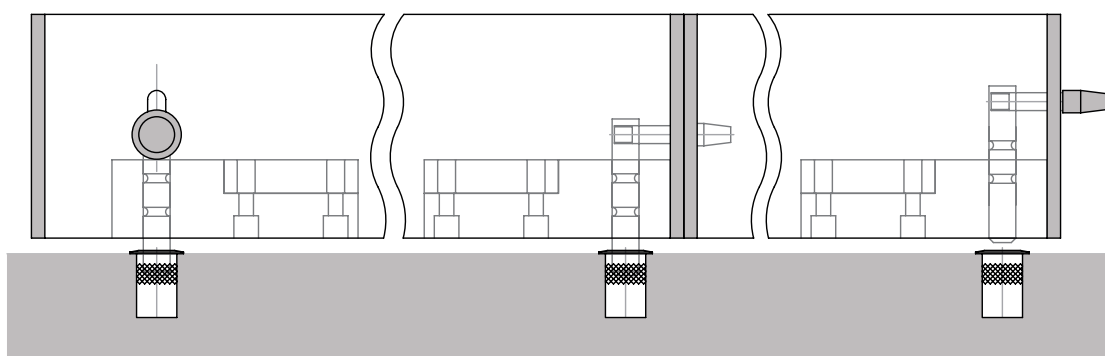
Swing or sliding panel with one or 2 cylinder locks with or without cylinder protection.



Swing or sliding panel with front foot operated locking.



Sliding panel with front foot operated locking on one side and side foot operated interlocking on the other.



SUGGESTED SPECIFIER TEXT FOR TENDER DOCUMENTS

The STACKMASTER mobile partition wall consists of separate individually suspended panels without a bottom guide arrangement.

The panels are individually maneuvered by hand into a stacking arrangement.

The system is available with weather strips all around the panels and the gap in-between the top track and the top rail of the door can never be more than 16 mm before putting the weather strips.

Top and bottom tracks is integrated channels for weather strips at both sides in order to hide the connecting bolt of the hangers.

The end caps of the door rails must have the same channels to make sure that the weather strips will not be discontinued at the position of the end-caps.

Curves and stacking arrangements elements have to be made out of solid components with internal curves without any cut in the middle of the curve in order to achieve a smooth operation.

The first panel at the side of the stacking area is a swing door on floor closer or on a free swing pivot.

Each roller has a capacity of 100 kg. (200 kg. /panel) and is equipped with 4 top guiding wheels and 4 guiding wheels in the channel opening to guaranty a smooth operation.

The track has a dimension of maximum 70 x 70 mm and has an internal channel to allow the use of connecting strips for alignment of the different parts, reachable from the inside of the track profile.

The aluminum glass retention profile used at both the top and bottom of the glass panel measures 32 x 100 mm.

The 2-part profile is screwed onto the glass by the use of screws which are not visible from the outside without the need to use clip-on or cladded covers. Special foot operated locks have to secure the locking into the floor and make a connection in between all sliding panels.

The door rails are equipped with 10 or 12 mm thick tempered glass.