



Pentures, serrures
et pièces de fixation
Locks and patch fittings

ASSA ABLOY

Pentures,
serrures et
pièces de fixation
*Locks and
patch fittings*

Cilindric®

Caractéristiques techniques

- Dimensions \varnothing 55 mm hauteur 75 mm
- Inox AISI 304
- Pour verre de 8, 10 et 12 mm
- Montage sur encoche
- Poids maximum 100 kg

Technical features

- Dimensions \varnothing 55 mm height 75 mm
- Stainless steel 304
- For 8, 10 and 12 mm thick glass
- Assembly on notch
- Maximum door weight 100 kg



LES + PRODUITS

The + product

Design High Tech

Grande qualité
de finition

Résistance

Modularité

Inox massif

High tech design

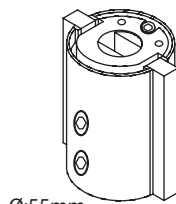
High quality finishes

Resistance

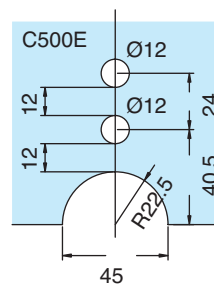
Modularity

Solid stainless Steel

C500D



\varnothing :55mm
height:75mm



Références / References



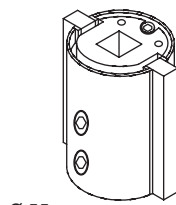
Penture basse empreinte pour axe allemand
Bottom patch fitting German insert



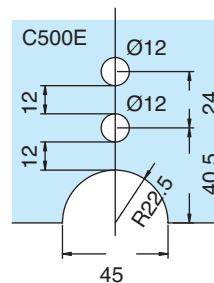
Inox Brossé
Brushed stainless steel

C500D.15

C500I



\varnothing :55mm
height:75mm



Références / References



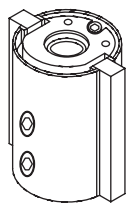
Penture basse empreinte pour insert italien
Bottom patch fitting Italian insert



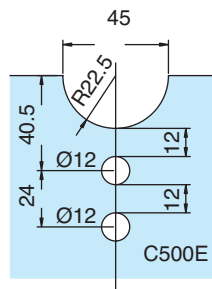
Inox Brossé
Brushed stainless steel

C500I.15

C501



Ø:55mm
height:75mm



C500E



Inox Brossé
Brushed stainless steel

Références / References

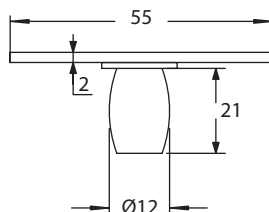


Penture haute
Top patch fitting

C501.15

Pentures,
serrures et
pièces de fixation
Locks and
patch fittings

C502



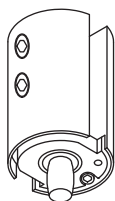
Inox Brossé
Brushed stainless steel

Références / References

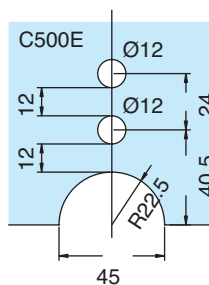
Pivot haut, fixation linteau ou plafond
Top pivot, fixing lintel or ceiling

C502.15

C511



Ø:55mm
height:75mm



C500E



Inox Brossé
Brushed stainless steel

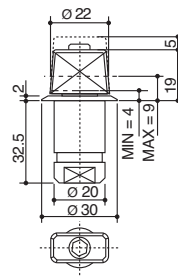
Références / References



Contre-sabot d'imposte avec pivot
Transom panel patch with pivot

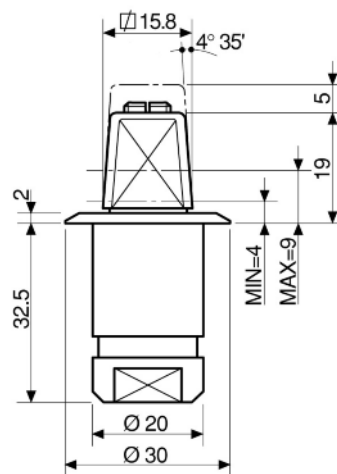
C511.15

AC299.33



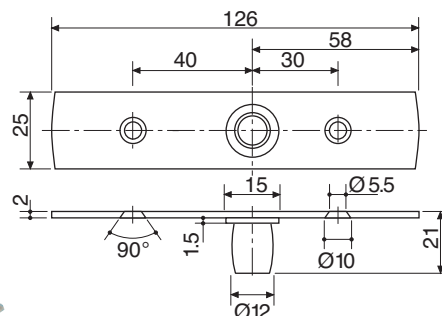
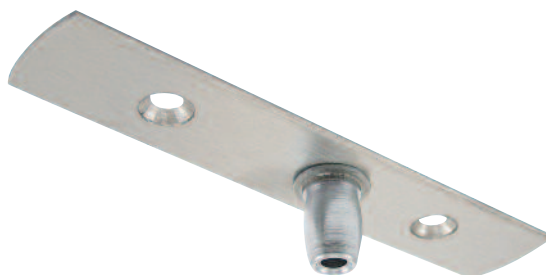
Crapaudine à sceller réglable axe rectangulaire allemand
Adjustable German rectangular floor pivot, to be embedded

AC246.33



Crapaudine à sceller réglable axe carré italien
Adjustable Italian square floor pivot, to be embedded

V502



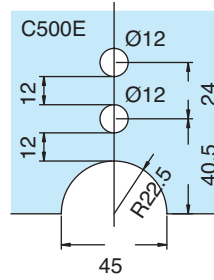
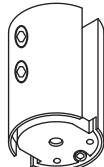
Références / References

Pivot supérieur pour V501/V201
Offset top pivot for V501/V201


Inox Brossé
Stainless steel effect

V502.15

C528A



Inox Brossé
Brushed stainless steel

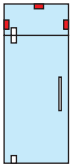
Références / References



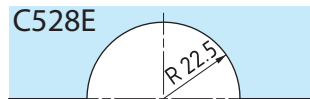
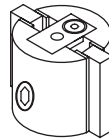
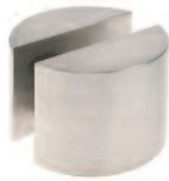
Ø:55mm
height:75mm

C528A.15

Pièce de fixation pour panneaux fixe
Wall to glass patch for transom or fixed panel



C528B



Inox Brossé
Brushed stainless steel

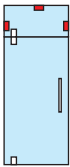
Références / References



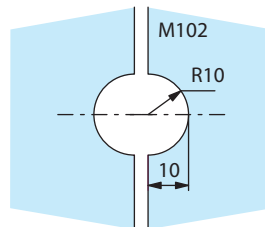
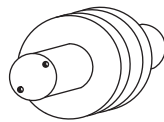
Ø:55mm
height:35mm

C528B.15

Cilindric pièce de fixation pour panneaux fixe hauteur 35 mm
Cilindric wall to glass patch for transom or fixed panel height 35mm



C581



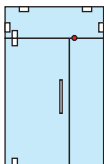
Inox Brossé
Brushed stainless steel

Références / References

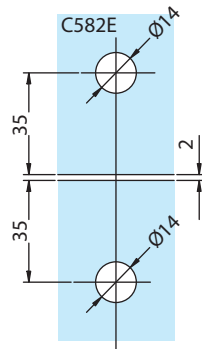
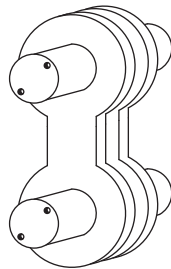


C581.15

Pièce de liaison pour 2 glaces fixes modèle rond / simple
Connector for 2 fixed panels single rounded model



C582



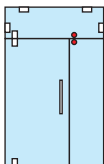
Inox Brossé
Brushed stainless steel

Références / References

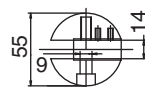
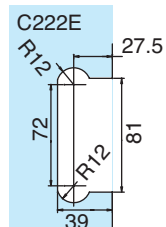
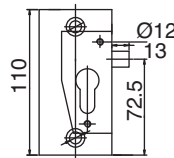
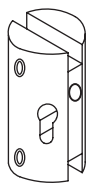


C582.15

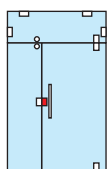
Pièce de liaison pour 2 glaces fixes modèle '8'
Connector for 2 fixed panels '8' shape



C222L



Inox Brossé
Brushed stainless steel



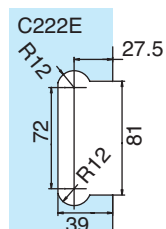
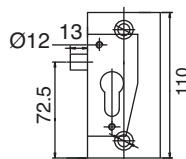
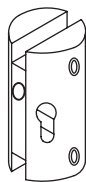
Références / References



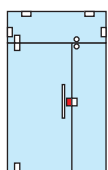
Serrure bord de verre gauche extérieur, sans cylindre et sans gâche
Lock on left outside edge of glass, supplied without cylinder and flat keep

C222L.15

C222R



Inox Brossé
Brushed stainless steel



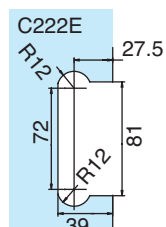
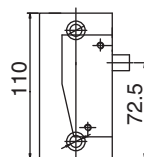
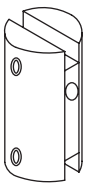
Références / References



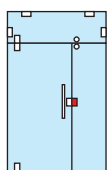
Serrure bord de verre droite extérieur, sans cylindre et sans gâche
Lock on right outside edge of glass, supplied without cylinder and flat keep

C222R.15

C223L



Inox Brossé
Brushed stainless steel



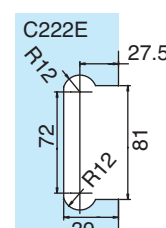
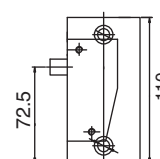
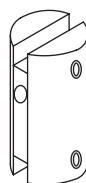
Références / References



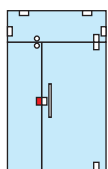
Contre-boîtier pour serrure, bord de verre gauche extérieur
Patch keep on left side edge of fixed panel

C223L.15

C223R



Inox Brossé
Brushed stainless steel



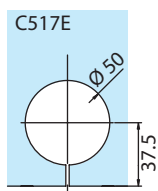
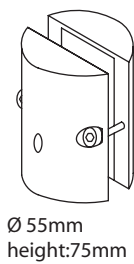
Références / References



Contre-boîtier pour serrure, bord de verre droit extérieur
Patch keep on right side edge of fixed panel

C223R.15

C517



Références / References

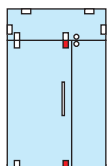


Serrure à clé sans gâche
Lock with key without flat keep

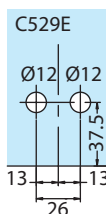
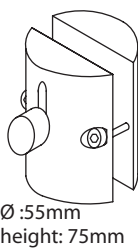


Inox Brossé
Brushed stainless steel

C517.15



C529



Références / References

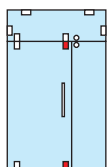


Serrure à pieds sans gâche
Foot operated lock without flat keep



Inox Brossé
Brushed stainless steel

C529.15



Pentures,
serrures et
pièces de fixation
Locks and
patch fittings

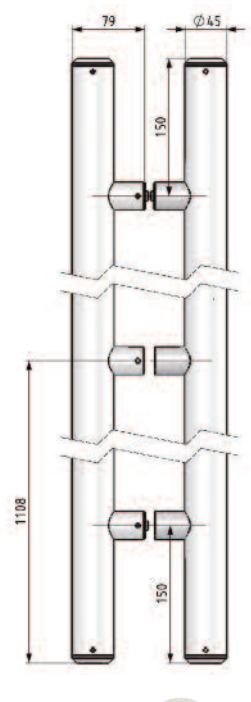
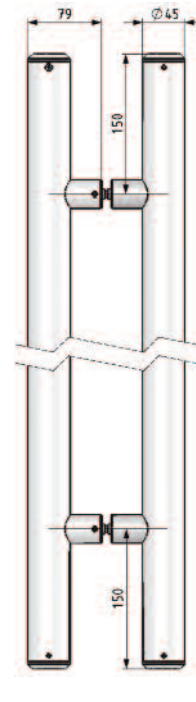
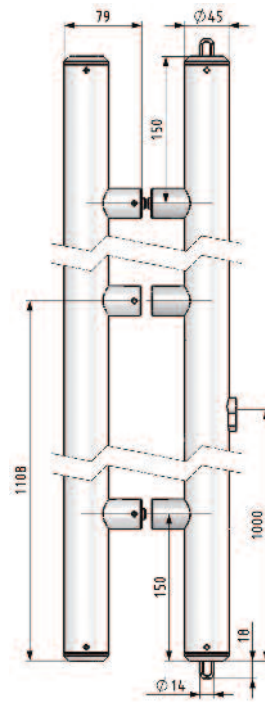
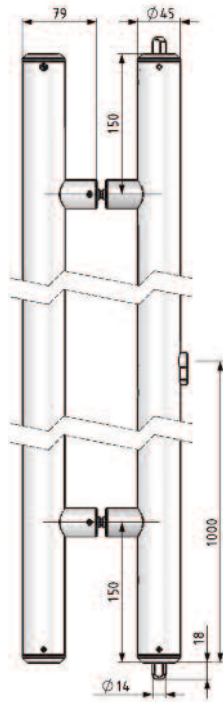
Poignées
Handles

C600PG22

C600PG30

C601PG22

C601PG30



Références / References



Inox Brossé
Brushed stainless steel

Poignées Ø 45 mm, avec serrure 2 points d'un côté, hauteur maxi : 2200 mm
Handle 45 Ø mm with 2 point lock on one side, height max : 2200 mm

C600PG22.15

Poignées Ø 45 mm, avec serrure 2 points d'un côté, hauteur entre 2200 mm et 3000 mm maxi
Handle 45 Ø mm with 2 point lock on one side, height max between 2200 mm and 3000 mm

C600PG30.15

Poignées Ø 45 mm, hauteur maxi : 2200 mm
Handle 45 Ø mm height max 2200 mm

C601PG22.15

Poignées Ø 45 mm, hauteur entre 2200 mm et 3000 mm maxi
Handle 45 Ø mm, height max between 2200 mm and 3000 mm

C601PG30.15

LES + PRODUITS

The + product

Esthétique

Double fonction :
tirage et verrouillage

Robustesse

Porte grande
hauteur

Attractive design

Double fonction :
pull and lock

Resistant

For high doors



C532



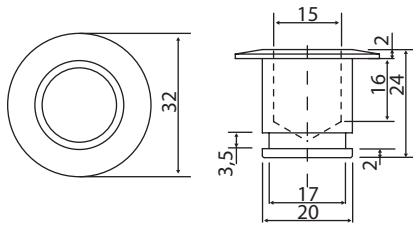
Inox Brossé
Brushed stainless steel

Références / References

Gâche pour poignée C600
Keep plate for C600

C532.15

C541



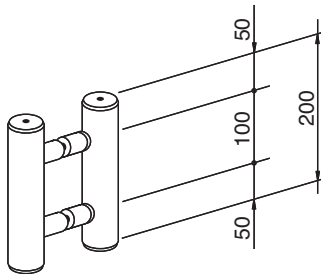
Inox Brossé
Brushed stainless steel

Références / References

Gâche tubulaire pour pêne bas des C600-C517-C529
Tubular keep bottom bolt for C600-C517-C529

C541.15

C603PG



Inox Brossé
Brushed stainless steel

Références / References



Contre-boîtier d'imposte pour C600
Transom patch keep for C600

C603PG.15

Pentures 101

Caractéristiques techniques

- Pour verre trempé de 10 mm
- Montage sur encoche 101
- Poids de porte maximum 50 kg
- Dimensions maxi des portes 900 x 2200 mm
- Réversible droite, gauche, haute ou basse pour les séries 3271 et 3275
- Réversible droite, gauche pour les séries 3272 et 3273
- Livré avec joints épaisseur 1 mm
- Pentures basses compatibles avec :
 - Pivot frein de sol hydraulique
 - Crapaudine

Technical features

- For 10 mm thick toughened glass
- Assembly on notch 101
- Maximum door weight 50 kg
- Dimensions size of the doors 900 x 2200 mm
- Top or bottom hinge reversible left or right for series 3271 and 3275
- Left or right hinge reversible for series 3271 and 3275
- Supplied with spacers of 1 mm thick
- Bottom hinge compatible with :
 - Hydraulic floor sprin
 - Pivot

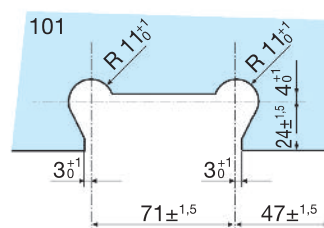
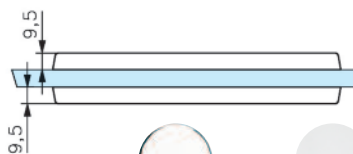
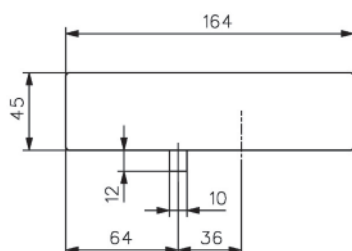
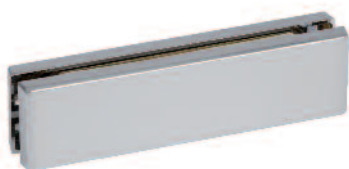


LES + PRODUITS

The + product

Réversible
droite, gauche,
haute ou basse
pour 3271 / 3275

Top or bottom hinge
reversible left or right
for 3271 and 3275



Références / References

3271



Chromé brillant
Bright chromium

Chromé mat
Matt chromium

Doré
Gold plated

Laqué blanc 9010
Lacquered white RAL 9010

Penture réversible haute, basse à enjoliveurs pour axe carré français
Top and bottom reversible patch hinge with cover plate, French square recess

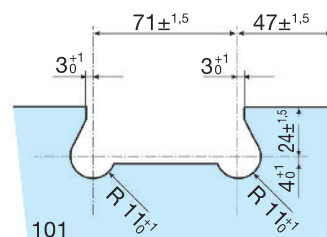
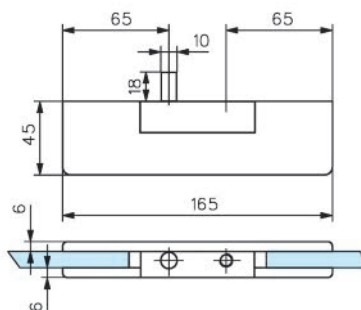
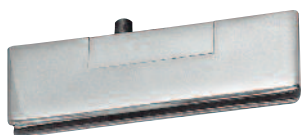
3271.30.0

3271.31.0

3271.40.0

3271.51.0

3272



Références / References



Laiton poli
Polished brass



Chromé brillant
Bright chromium



Chromé mat
Matt chromium

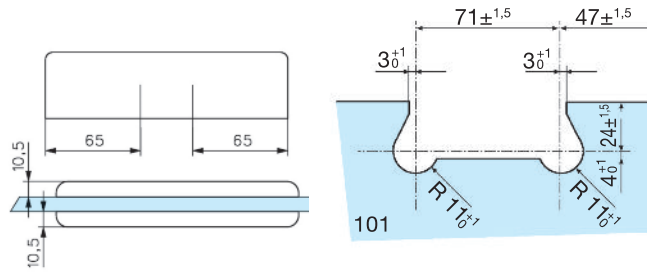
Penture massive haute
Solid top patch hinge

3272.00.0

3272.30.0

3272.31.0

3273



Pentures,
serrures et
pièces de fixation
*Locks and
patch fittings*

Références / References



Laiton poli
Polished brass



Chromé brillant
Bright chromium



Chromé mat
Matt chromium

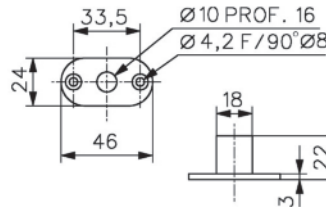
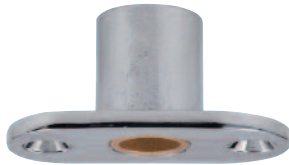
Penture massive basse pour axe carré français
Solid bottom patch hinge with French square recess

3273.00.0

3273.30.0

3273.31.0

3280



Références / References

Boîte à roulement pour pentures séries 3271, 3272
Bearing box for patch hinges series 3271, 3272



Laiton poli
Polished brass



Chromé brillant
Bright chromium



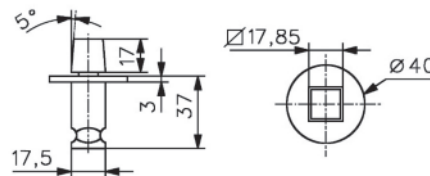
Chromé mat
Matt chromium

3280.00.0

3280.30.0

3280.31.0

3281



Références / References



Laiton poli
Polished brass



Chromé brillant
Bright chromium



Chromé mat
Matt chromium

Crapaudine à axe carré pour pentures séries 3271 et 3273
Square pin step bearing for patch hinges series 3271 and 3273

3281.00.0

3281.30.0

3281.31.0

Serrures basses , boîtier gâche et gâche séries 1358

Bottom lock, matching patch keep
and keep with guard series 1358

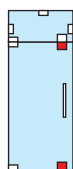
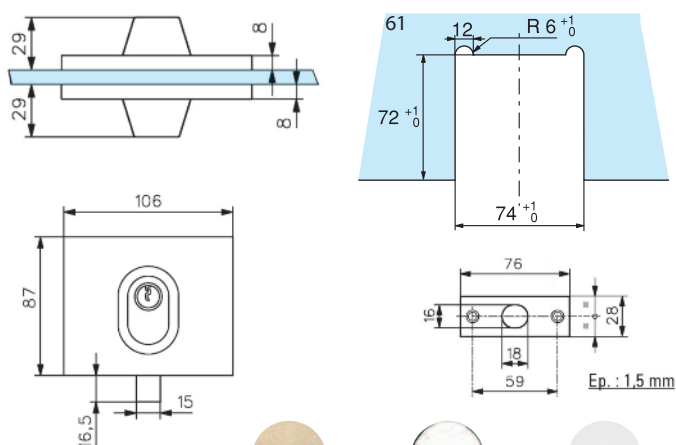
Caractéristiques techniques

- Pour verre trempé de 10 mm
- Montage sur encoche 61
- Pêne monobloc avec bague anti-sciage
- A cylindre profil européen panneton DIN (norme DIN 18254)
- Livré avec 1 gâche plate et 3 clés

Technical features

- For 10 mm thick toughened glass
- Assembly on notch 61
- One piece bolt with hardened insert
- European profile cylinder (DIN 18254)
- Supplied with flat keep and 3 keys

1358



Références / References



Laiton poli
Polished brass



Chromé brillant
Bright chromium



Chromé mat
Matt chromium

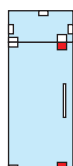
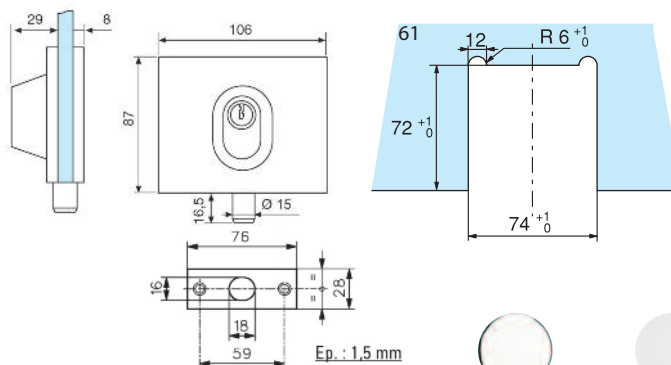
Serrure basse avec cylindre à 2 entrées de clé
Bottom lock with euro profile cylinder with 2 key entries

1358.00.0

1358.30.0

1358.31.0

1353



Références / References



Chromé brillant
Bright chromium



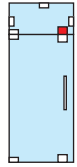
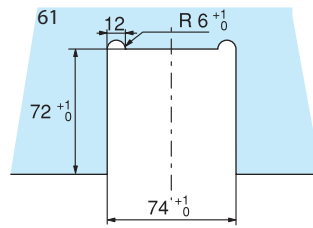
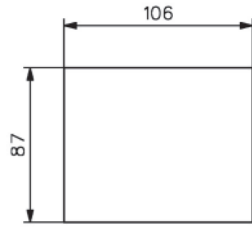
Chromé mat
Matt chromium

Serrure basse à une entrée de clé
Bottom lock with key on one side

1353.30.0

1353.31.0

1359



Références / References



Boîtier gâche pour serrures 1352, 1353, 1357 et 1358
 Matching patch keep for lock 1352, 1353, 1357 and 1358



Laiton poli
 Polished brass



Chromé brillant
 Bright chromium



Chromé mat
 Matt chromium

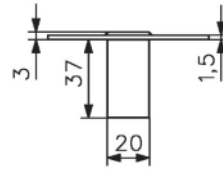
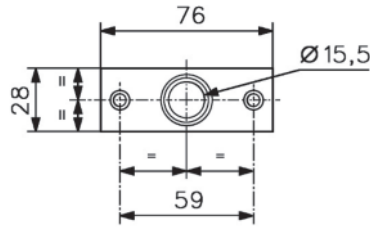
1359.00.0

1359.30.0

1359.31.0

Pentures,
 serrures et
 pièces de fixation
 Locks and
 patch fittings

9954



Laiton poli
 Polished brass



Chromé mat
 Matt chromium

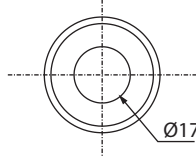
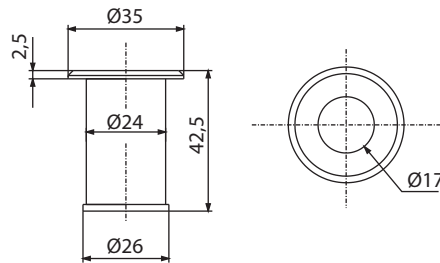
Références / References

Gâche anti-poussière à obturateur avec platine à 2 trous de fixation,
 pour serrures série 1358
 Keep with anti-dust guard, two fixing holes for locks series 1358

9954.00.0

9954.31.0

9954.**.3



Laiton poli
 Polished brass



Chromé mat
 Matt chromium

Références / References

Gâche anti-poussière à obturateur avec platine cylindrique à visser
 pour serrures série 1358
 Keep with anti-dust guard for locks series 1358

9954.00.3

9954.31.3

Verrou cavalier à demi-cylindre 1435

Clip on lock with half euro profile cylinder 1435

Caractéristiques techniques

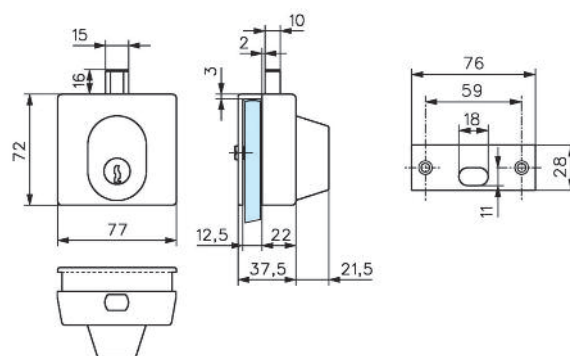
- Montage sans encoche
- Se pose en cavalier sur la porte, jeu minimum 4 mm
- Fixation par 2 vis de serrage pour 1435 et 1439
- Permet d'obtenir un 2ème point de condamnation avec une serrure basse série 1358
- Possibilités de combinaison avec passe général sauf 1436
- Livré avec 1 gâche plate et 3 clés

Technical features

- No notches required
- Fixing on edge of door, minimum space 4 mm
- Fixing with 2 screws for series 1435 and 1439
- To match bottom lock series 1358 to provide 2 locking points
- Possibility of combinations with master key except 1436
- Supplied with flat keep and 3 keys



1435



Références / References



Chromé brillant
Bright chromium



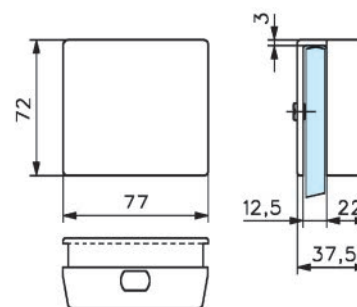
Chromé mat
Matt chromium

Verrou cavalier à demi-cylindre profil européen panneton DIN
Clip on lock with half euro profile cylinder

1435.30.0

1435.31.0

1439



Références / References



Chromé brillant
Bright chromium



Chromé mat
Matt chromium

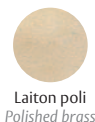
Boîtier gâche pour verrou cavalier 1435
Matching patch keep to fit with series 1435

1439.30.0

1439.31.0



S171..3**



Laiton poli
Polished brass



Inox Brossé
Brushed stainless steel



Inox poli
Polished stainless steel

100 vis pour pentures séries 3272 et 3273
100 screws for patch hinge series 3272 and 3273

S171.00.3

S171.15.3

S171.16.3

S229.99.4



100 joints épaisseur 1mm pour pentures séries 3272 et 3273
100 spacers 1 mm thickness for patch hinge series 3272 and 3273

S229.99.6



100 joints épaisseur 1,5 mm pour pentures séries 3271 et 3275
100 spacers 1,5 mm thickness for patch hinge series 3271 and 3275

Pentures,
serrures et
pièces de fixation
*Patch fittings
and locks*

PF Patch fittings

Caractéristiques techniques

- Pour verre épaisseur 10 et 12 mm
- Poids maximum 80 kg
- Dimensions maxi. des portes 1100 x 2400 mm

Technical features

- For 10 and 12 mm thick glass
- Maximum Door Weight 80 kg
- Maximum Door Width 1100 x 2400 mm



LES + PRODUITS

The + product

Grande qualité
de finition

Gamme complète

Réversibles

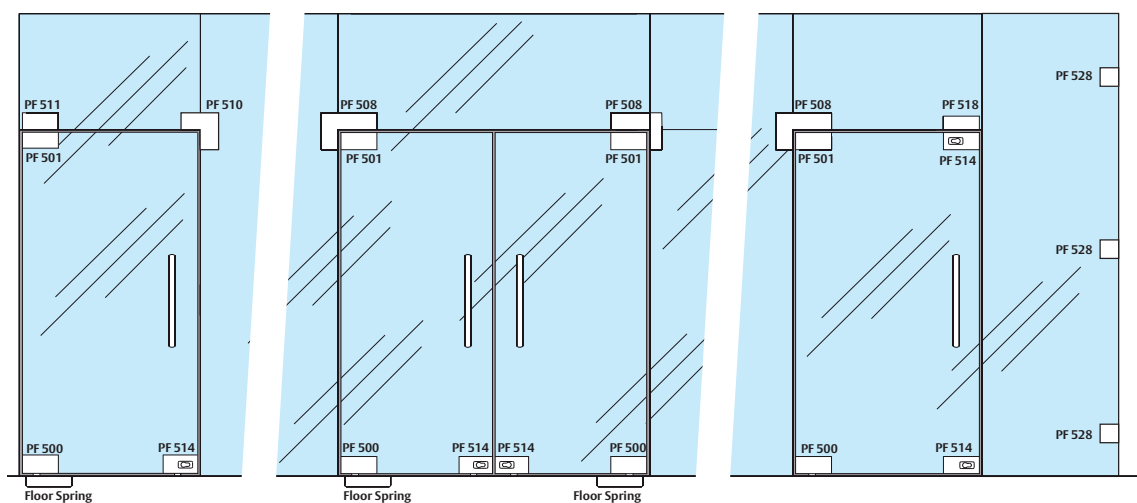
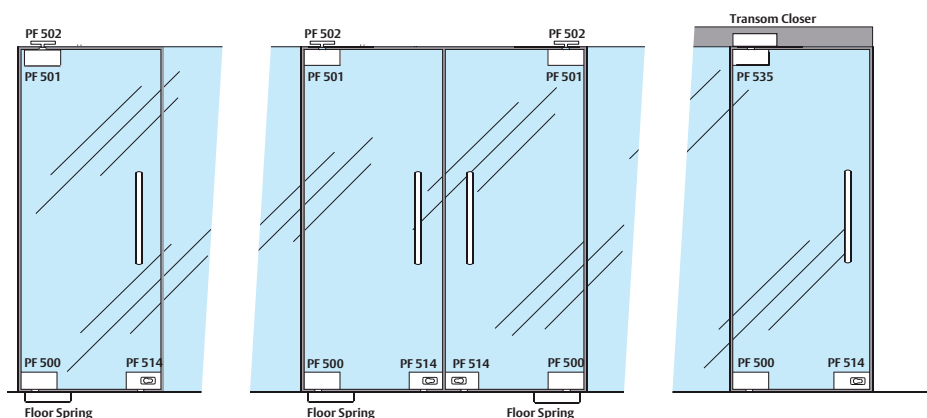
High quality finishes

Full range

Reversible

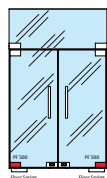
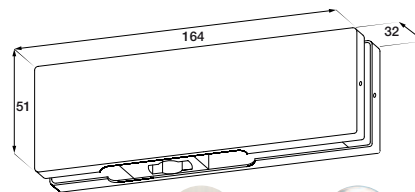
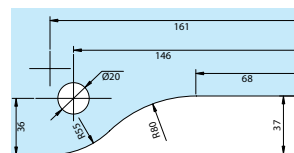
Installation standard

Standard installation

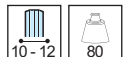


Pentures,
serrures et
pièces de fixation
*Patch fittings
and locks*

PF500



Références / References



Penture basse pour axe rectangulaire allemand
Bottom Patch fitting for German Spindle



Inox Brossé
Brushed stainless steel



Inox poli
Polished stainless steel

PF500.15

PF500.16



LES + PRODUITS

The + product

Grande qualité
de finition

Gamme complète

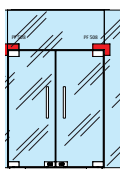
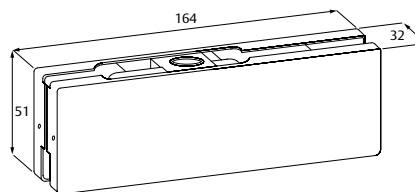
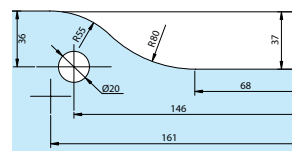
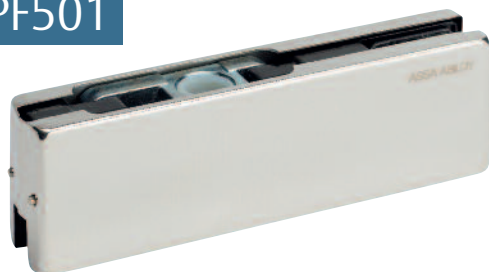
Réversibles

High quality finishes

Full range

Reversible

PF501



Références / References



Penture haute
Top Patch fitting



Inox Brossé
Brushed stainless steel

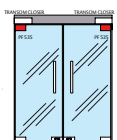
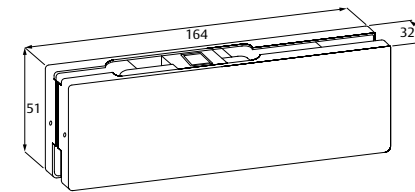
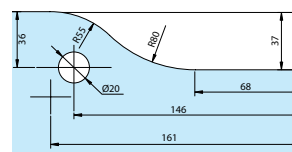
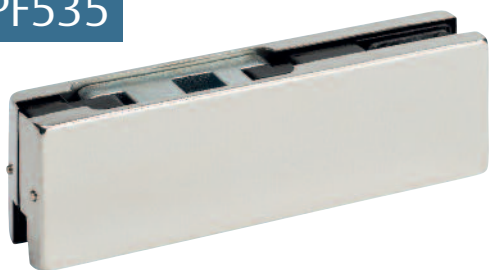


Inox poli
Polished stainless steel

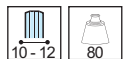
PF501.15

PF501.16

PF535



Références / References



Penture haute pour ferme porte 5600
Top patch fitting for door closer 5600



Inox Brossé
Brushed stainless steel



Inox poli
Polished stainless steel

PF535.15

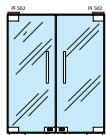
PF535.16

PF502



Pentures,
serrures et
pièces de fixation
*Patch fittings
and locks*

Références / References



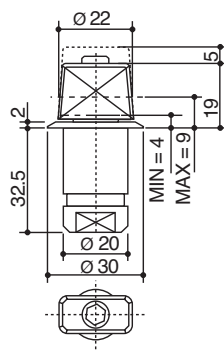
Pivot supérieur pour PF501
Top pivot for PF501



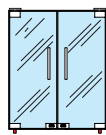
Inox Brossé
Brushed stainless steel

PF502 .15

AC299.33



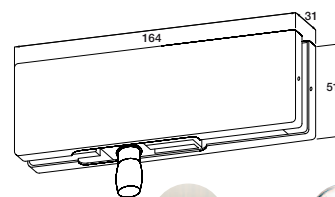
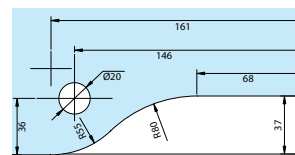
Références / References



Crapaudine à sceller axe rectangulaire allemand
Adjustable German rectangular free swing floor pivot

Pentures,
serrures et
pièces de fixation
*Patch fittings
and locks*

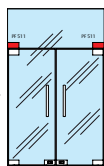
PF511.1



Inox Brossé
Brushed stainless steel



Inox poli
Polished stainless steel



Références / References



Contre-sabot d'imposte avec tige filetée et cheville
Side fixed transom panel patch with rod and plug

PF511.1.15

PF511.1.16



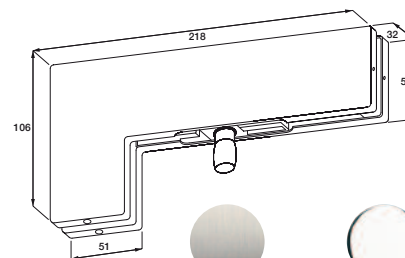
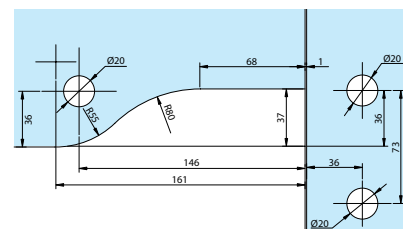
LES + PRODUITS

The + product

Grande qualité
de finition
Gamme complète
Réversibles

*High quality finishes
Full range
Reversible*

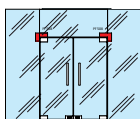
PF508



Inox Brossé
Brushed stainless steel



Inox poli
Polished stainless steel



Références / References

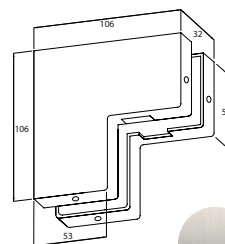
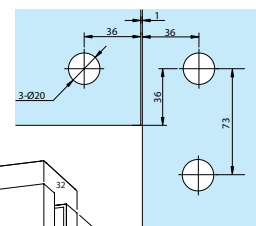


Pièce de liaison imposte et glace fixe avec pivot
Transom and side panel link patch with pivot

PF508.15

PF508.16

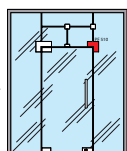
PF510



Inox Brossé
Brushed stainless steel



Inox poli
Polished stainless steel



Références / References

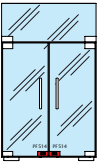
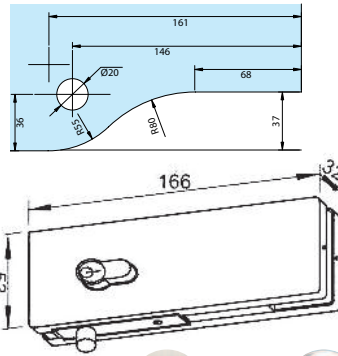


Pièce de liaison imposte et glace fixe avec butée réversible
Transom and side panel link patch with reversible stop

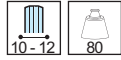
PF510.15

PF510.16

PF514



Références / References



Serrure d'angle avec cylindre Européen
Corner Lock for Europrofile Cylinder



Inox Brossé
Brushed stainless steel

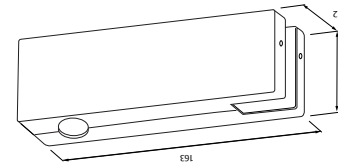
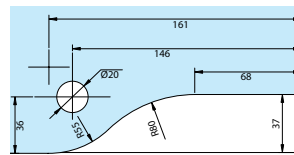
PF514.15



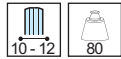
Inox poli
Polished stainless steel

PF514.16

PF518



Références / References



Contre-boîtier avec tige filetée pour serrure de coin PF514
Side fixed transom panel patch with rod and plug for PF514 corner lock



Inox Brossé
Brushed stainless steel

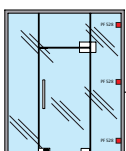
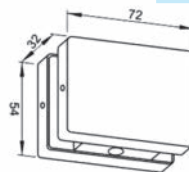
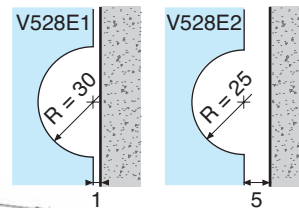
PF518.15



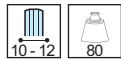
Inox poli
Polished stainless steel

PF518.16

PF528



Références / References



Pièce de fixation murale pour glaces fixes à vis (Montage sur encoche V528E1-V528E2)
Wall to glass patch for fixed panel to screw on (Assembly on notch V528E1-V528E2)



Inox Brossé
Brushed stainless steel

PF528.15



Inox poli
Polished stainless steel

PF528.16

Pentures,
serrures et
pièces de fixation
*Patch fittings
and locks*





Serrures anti-paniques
Anti-panic locks

ASSA ABLOY

Serrures
anti-paniques
Anti-panic locks

Configuration sur demande : nous consulter

Set up on demand : contact us



LES + PRODUITS

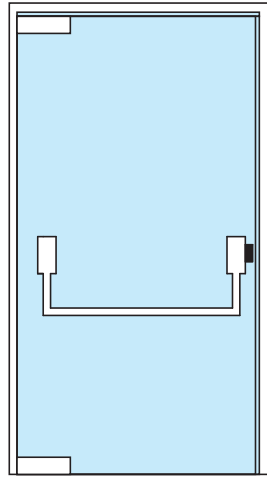
The + product

Adaptée
pour porte en verre

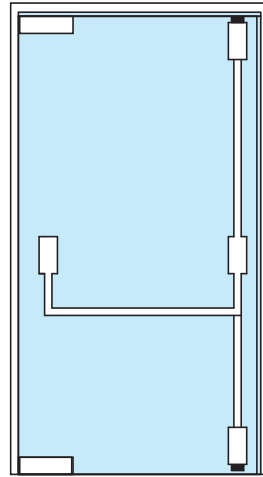
Esthétique

*Adapted
to glass doors*

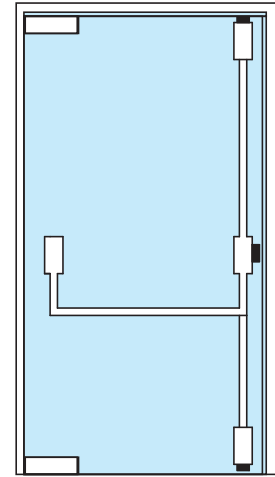
Aesthetic



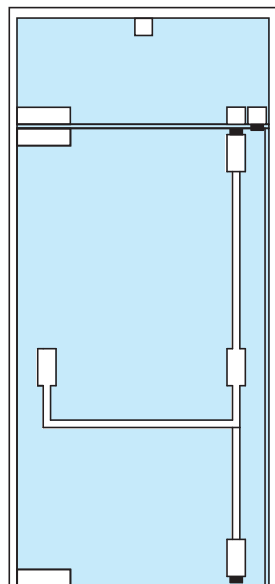
Porte A / Door A



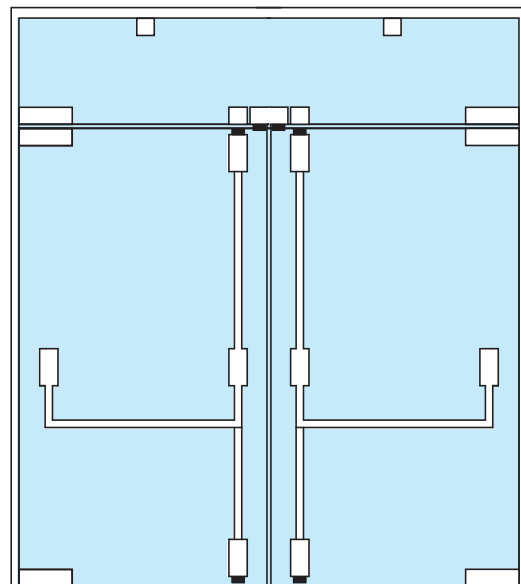
Porte B / Door B



Porte C / Door C



Porte D / Door D



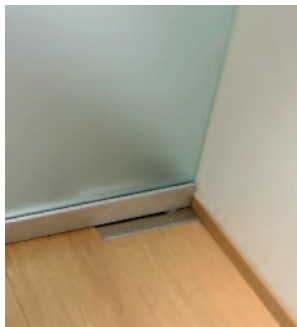
Porte E / Door E



Plinthes
Door rails

ASSA ABLOY

Série FRP



Caractéristiques techniques

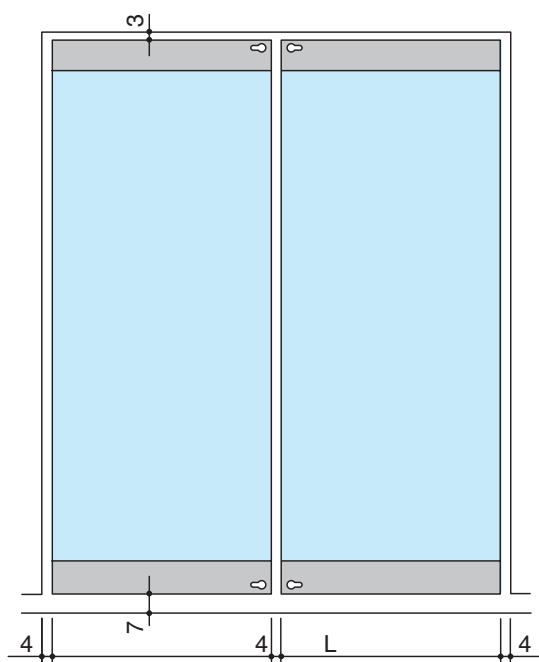
- Hauteur 100 mm
- Pour verre de 10 et 12 mm
- Montage sans encoche
- Poids maximum 300 kg
- Porte maxi 1400 x 2400 mm
- Montage à l'aide de vis invisible

Technical features

- Height 100 mm
- For 10 and 12 mm thick glass
- No notches needed
- Maximum door weight 300 kg
- Maximum door size 1400 x 2400 mm
- Clamping by using invisible screws

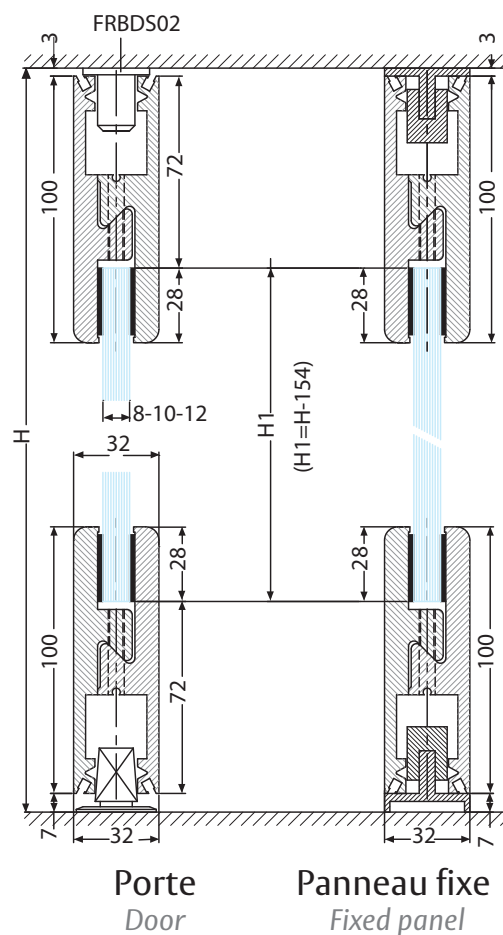
Jeux recommandés.

Recommended tolerances.

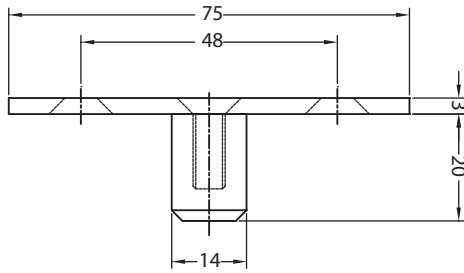


Préparation du verre.

Glass preparation.

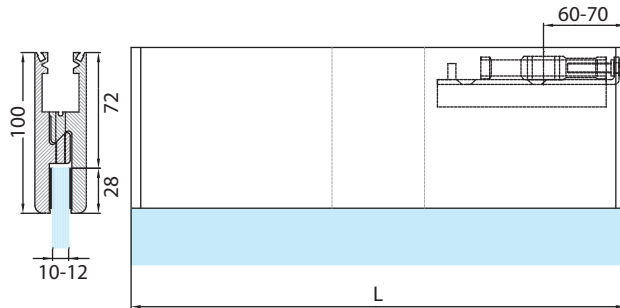
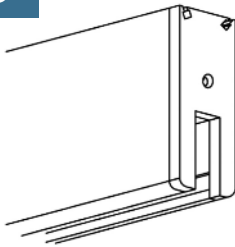


FRBDS02.99



Pivot haut pour plinthe haute FRP02
Top pivot for top door rail FRP02

FRP02B



Références / References

Plinthe supérieure hauteur 100 mm avec insert et embouts
Top rail 100 mm high with pivot block and end caps



Pour verre de 10 mm
For 10 mm glass

FRP02B/10.12

FRP02B/10.36

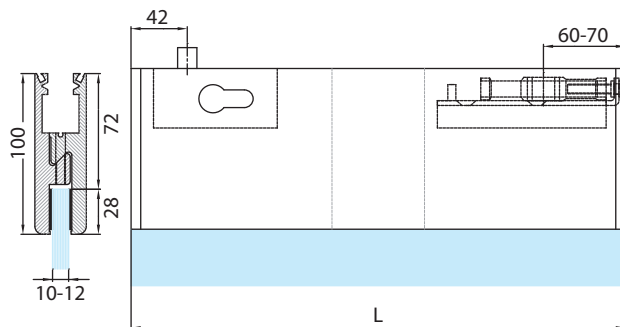
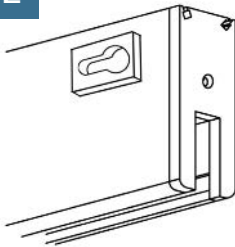


Pour verre de 12 mm
For 12 mm glass

FRP02B/12.12

FRP02B/12.36

FRP02BL



Références / References

Plinthe supérieure hauteur 100 mm avec insert, embouts, serrure et cylindre
Top rail 100 mm high with pivot block, end caps, lock and cylinder



Pour verre de 10 mm
For 10 mm glass

FRP02BL/10.12

FRP02BL/10.36

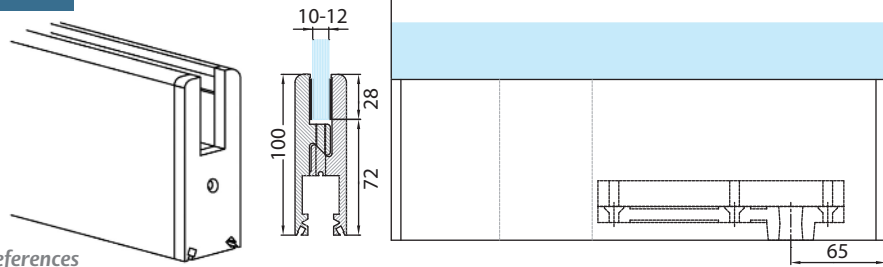


Pour verre de 12 mm
For 12 mm glass

FRP02BL/12.12


FRP02BL/12.36


FRP020



Références / References

  Plinthe inférieure hauteur 100 mm avec insert carré italien et embouts
Bottom rail 100 mm high with Italian square spindle and end caps


 Aluminium anodisé Argent Brossé
Brushed anodised alu. silver

 Aluminium anodisé Aninox
Brushed anodised alu. aninox

 Pour verre de 10 mm
For 10 mm glass

FRP020/10.12

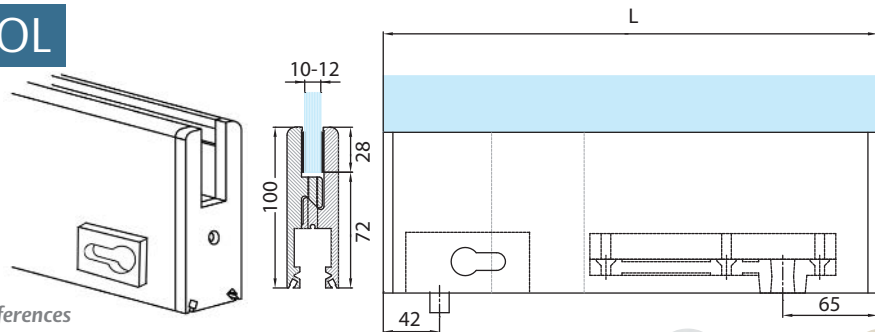
FRP020/10.36

 Pour verre de 12 mm
For 12 mm glass



FRP020/12.12


FRP020/12.36


FRP020L

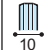


Références / References

  Plinthe inférieure hauteur 100 mm avec insert carré italien, embouts, serrure et cylindre
Bottom rail 100 mm high with Italian square spindle and end caps, lock and cylinder


 Aluminium anodisé Argent Brossé
Brushed anodised alu. silver

 Aluminium anodisé Aninox
Brushed anodised alu. aninox

 Pour verre de 10 mm
For 10 mm glass

FRP020L/10.12

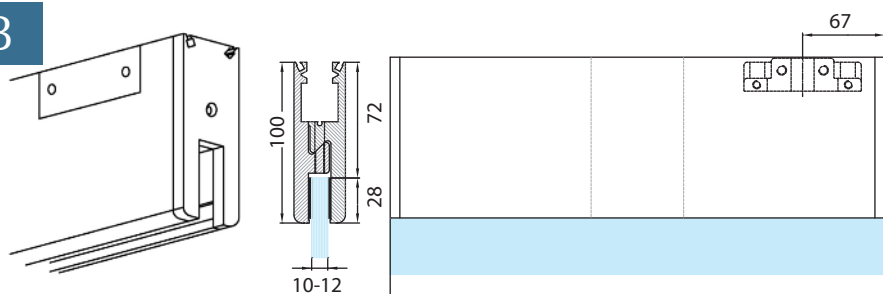
FRP020L/10.36

 Pour verre de 12 mm
For 12 mm glass

FRP020L/12.12

FRP020L/12.36

FRP07B




Références / References

Plinthe supérieure hauteur 100 mm avec insert pour ferme porte encastré série 5600 et embouts
Top rail 100 mm high with pivot block for closers series 5600 and end caps


 Aluminium anodisé Argent Brossé
Brushed anodised alu. silver

 Aluminium anodisé Aninox
Brushed anodised alu. aninox

 Pour verre de 10 mm
For 10 mm glass

FRP07B/10.12

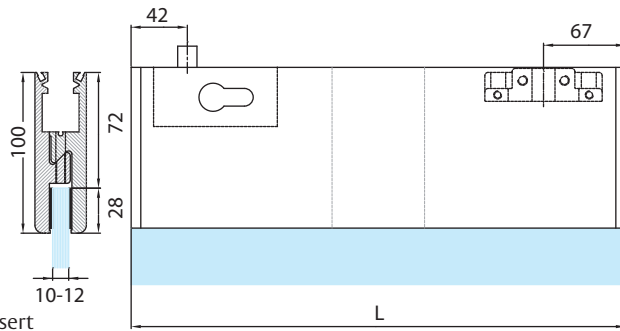
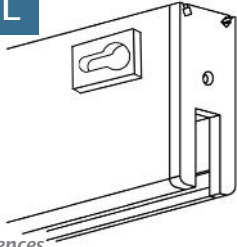
FRP07B/10.36

 Pour verre de 12 mm
For 12 mm glass

FRP07B/12.12

FRP07B/12.36

FRP07BL



Références / References

Plinthe supérieure hauteur 100 mm avec insert pour ferme porte encastré série 5600 et embouts
 Top rail 100 mm high with pivot block for closers series 5600 and end caps

Aluminium anodisé Argent Brossé / Brushed anodised alu. silver
 Aluminium anodisé Aninox / Brushed anodised alu. inox



Pour verre de 10 mm
 For 10 mm glass

FRP07BL/10.12

FRP07BL/10.36

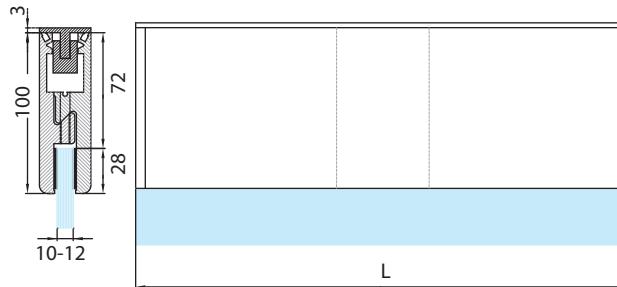
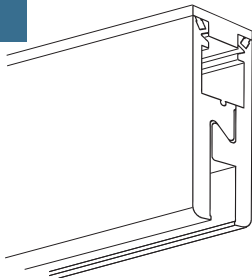


Pour verre de 12 mm
 For 12 mm glass

FRP07BL/12.12

FRP07BL/12.36

FRP06B



Références / References

Plinthe haute sans embout, hauteur 100 mm pour volumes fixes + Profilé supérieur de remplissage 3 mm
 Top rail 100 mm high for fixed panels, without end caps + 3 mm Top filler profile

Aluminium anodisé Argent Brossé / Brushed anodised alu. silver
 Aluminium anodisé Aninox / Brushed anodised alu. inox



Pour verre de 10 mm
 For 10 mm glass

FRP06B/10.12

FRP06B/10.36

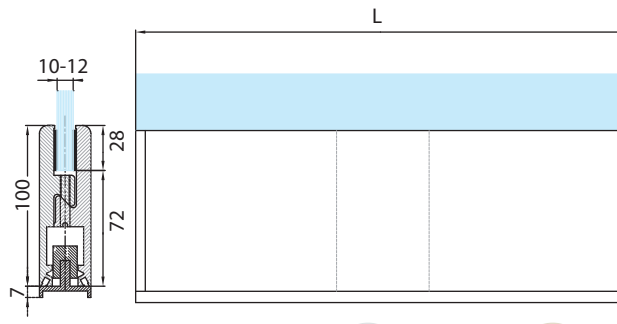
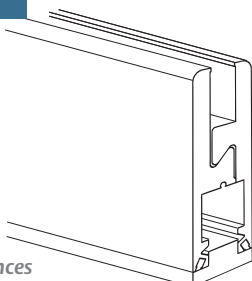


Pour verre de 12 mm
 For 12 mm glass

FRP06B/12.12

FRP06B/12.36

FRP06O



Références / References

Plinthe basse sans embout, hauteur 100 mm pour volumes fixes + Profilé inférieur de remplissage 7 mm
 Bottom rail 100 mm high for fixed panels, without end caps + 7 mm bottom filler profile

Aluminium anodisé Argent Brossé / Brushed anodised alu. silver
 Aluminium anodisé Aninox / Brushed anodised alu. inox



Pour verre de 10 mm
 For 10 mm glass

FRP06O/10.12

FRP06O/10.36

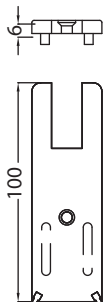


Pour verre de 12 mm
 For 12 mm glass

FRP06O/12.12

FRP06O/12.36

FRE14



Argent métallisé
Metallic silver



Noir mat
Black matt

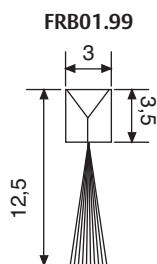
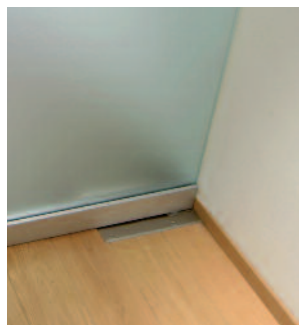
Références / References

Embout noir avec vis
Black end cap including screw

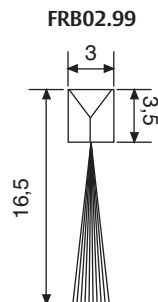
FRE14.73

FRE14.74

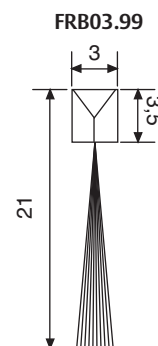
FRB**



FRB01.99



FRB02.99



FRB03.99

Références / References

Brosse d'étanchéité longueur 2 m pour jeu de 7 mm
Brushes length 2m for a tolerance of 7 mm

FRB01.99

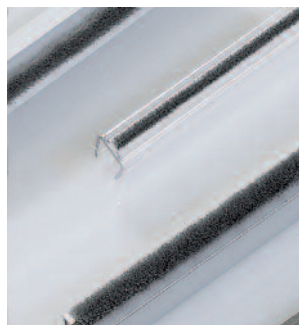
Brosse d'étanchéité longueur 2 m pour jeu de 9 mm
Brushes length 2m for a tolerance of 9 mm

FRB02.99

Brosse d'étanchéité longueur 2 m pour jeu de 13 mm
Brushes length 2m for a tolerance of 13 mm

FRB03.99





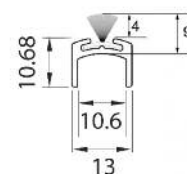
Caractéristiques techniques

- Pour verre de 8, 10, 12, 15 et 19 mm
- Montage sans encoche

Technical features

- For 8, 10, 12, 15 and 19 mm thick glass
- No notches needed

2810.xx.L3000



Références / References



Joint U avec brosse centrale
U profile with brush



Aluminium anodisé Argent Brossé
Brushed anodised alu. silver

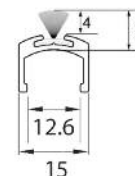


Aluminium anodisé Aninox
Brushed anodised alu. aninox

2810.12.L3000

2810.36.L3000

2812.xx.L3000



Références / References



Joint U avec brosse centrale
U profile with brush



Aluminium anodisé Argent Brossé
Brushed anodised alu. silver

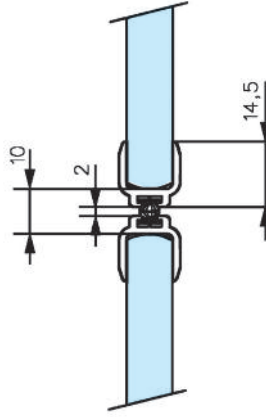
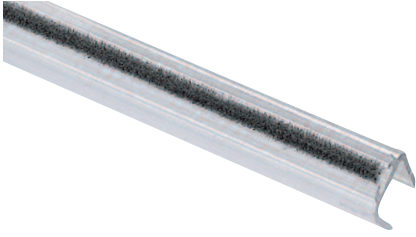


Aluminium anodisé Aninox
Brushed anodised alu. aninox

2812.12.L3000

2812.36.L3000

2809.**.4



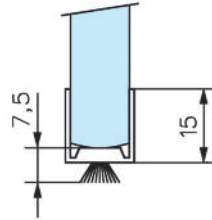
Références / References



Joint translucide avec brosse axée
Translucent sealing strip with central brush

2809.66.4

2810.10.*



Aluminium anodisé Argent satiné
Satin anodised alu. silver

Références / References

Joint aluminium avec brosse axée
Aluminium sealing strip with central brush



Pour verre de 8 mm
For 8 mm glass

2810.10.3



Pour verre de 10 mm
For 10 mm glass

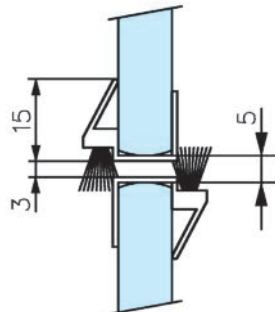
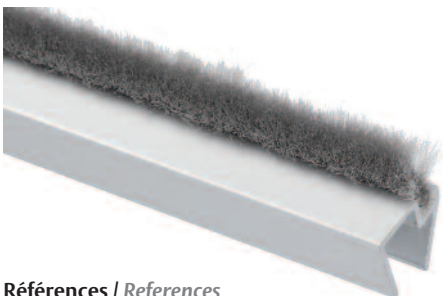
2810.10.4



Pour verre de 12 mm
For 12 mm glass

2810.10.5

2811.10.*



Aluminium anodisé Argent satiné
Satin anodised alu. silver

Références / References

Joint aluminium avec brosse déportée
Aluminium sealing strip with offset brush



Pour verre de 8 mm
For 8 mm glass

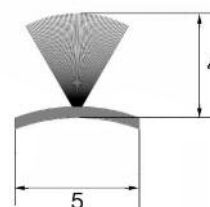
2811.10.3



Pour verre de 10 mm
For 10 mm glass

2811.10.4

FRKB01.99



Brosse autocollante pour toutes les épaisseurs de verre - le mètre
Brush self-adhesive for all glass thicknesses - per metre

28131



Aluminium anodisé Argent Brossé
Brushed anodised alu. silver

Références / References

Joint aluminium avec brosse autocollante longueur 1030mm pour toutes les épaisseurs de verre
Aluminium brush profile self-adhesive length 1030mm for all glass thicknesses

28131.12

• Livré avec 2 embouts

• Supplied with 2 end caps

2813



Aluminium anodisé Argent Brossé
Brushed anodised alu. silver

Références / References

Joint aluminium avec brosse autocollante longueur 2500 mm pour toutes les épaisseurs de verre
Aluminium brush profile self-adhesive length 2500 mm for all glass thicknesses

2813.12

• Livré avec 2 embouts

• Supplied with 2 end caps

2813R.99



Références / References

Embout droite pour joint brosse 2813
Cover cap Right for brush profile 2813

2813L.99



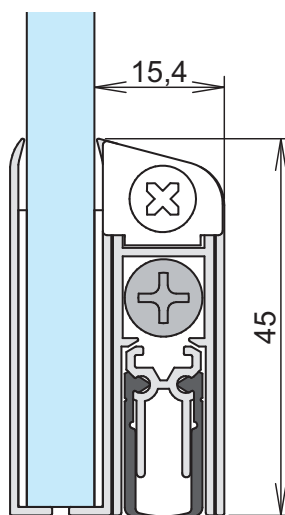
Références / References

Embout gauche pour joint brosse 2813
Cover cap Left for brush profile 2813

Plinthe automatique pour porte en verre

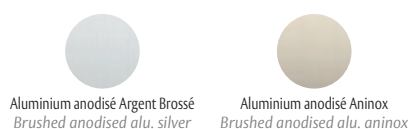
Drop-down seal for glass door

2815L833.*



- Optimise l'isolation acoustique et thermique de la porte
 - Pas d'encoche
 - Installation possible sur porte existante ou neuve
 - Testé pour plus de 1 000 000 de cycles
- Optimize the soundproofing and thermal insulation
 - No notches
 - Possible installation on existing or new doors
 - Tested for more than 1,000,000 cycles

Références / References



Joint bas de porte automatique avec cache adhésif Lg 708-833 mm <i>Drop down seal self adhesive with cover L 708-833 mm</i>	2815L833.12	2815L833.36
Joint bas de porte automatique avec cache adhésif Lg 833-958 mm <i>Drop down seal self adhesive with cover L 833-958 mm</i>	2815L958.12	2815L958.36
Drop down seal self adhesive with cover L 953-1083 mm <i>Joint bas de porte automatique avec cache adhésif Lg 953-1083 mm</i>	2815L1083.12	2815L1083.36
Joint bas de porte automatique avec cache adhésif Lg 1083-1208 mm <i>Drop down seal self adhesive with cover L 1083-1208 mm</i>	2815L1208.12	2815L1208.36

U151515




Références / References

SL Profil U 15x15x15x2mm (le mètre)
6000 mm U-profile 15x15x15x2mm (per metre)

 Aluminium anodisé Argent Brossé
 Brushed anodised alu. silver

 Aluminium anodisé Aninox
 Brushed anodised alu. aninox

 Laqué blanc 9010
 Lacquered white RAL 9010

U151515.12

U151515.36

U151515.51

U202020



Références / References

SL Profil U 20x20x20x2mm (le mètre)
6000 mm U-profile 20x20x20x2mm (per metre)

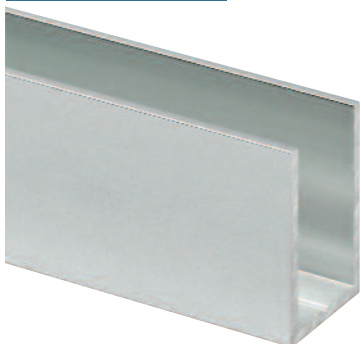
 Aluminium anodisé Argent Brossé
 Brushed anodised alu. silver

 Aluminium anodisé Aninox
 Brushed anodised alu. aninox

U202020.12

U202020.36

U302030



Références / References

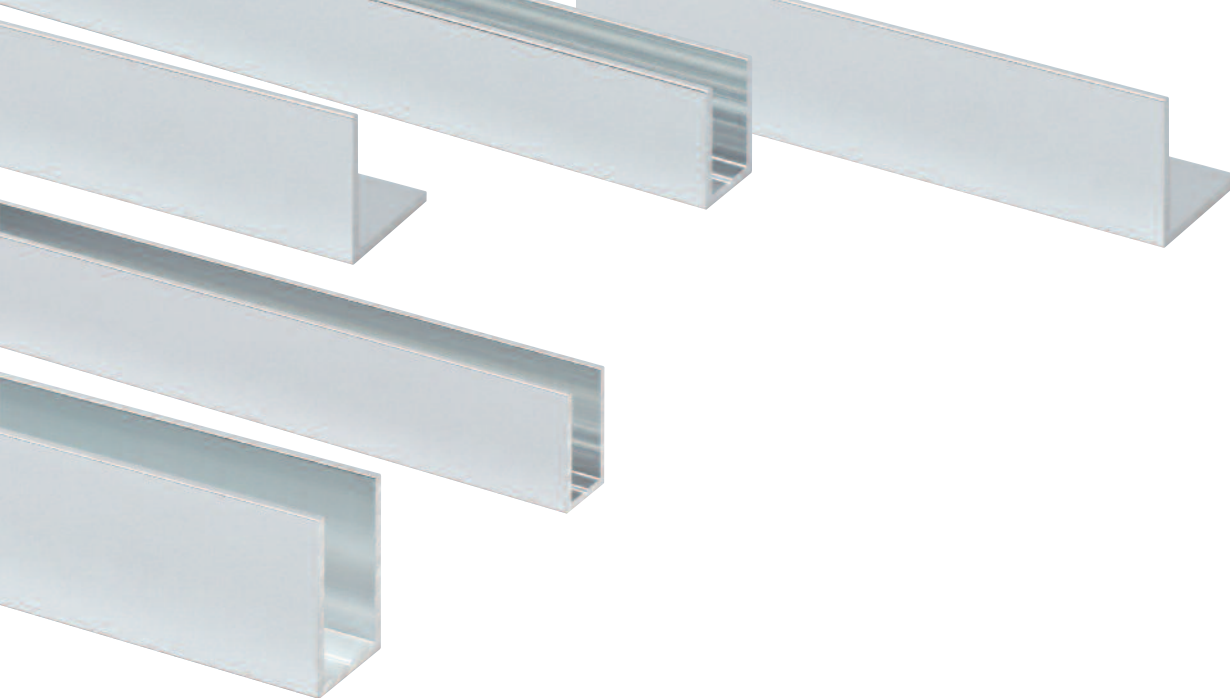
SL Profil U 30x20x30x2mm (le mètre)
6000 mm U-profile 30x20x30x2mm (per metre)

 Aluminium anodisé Argent Brossé
 Brushed anodised alu. silver

 Aluminium anodisé Aninox
 Brushed anodised alu. aninox

U302030.12

U302030.36



Profils U et L décor alu poli brillant

U and L profiles Polished aluminium finish



Alu poli brillant
Polished aluminium

Références / References

Profil U 15x15x15x2 mm largeur intérieure 11 mm longueur de 3000 mm <i>U-profile 15x15x15x2 mm 11 mm inside width 3000 mm length</i>	U151515.13
Profil U 20x12x20x1,5 mm largeur intérieure 9 mm longueur de 3000 mm <i>U-profile 20x12x20x1,5 mm 9 mm inside width 3000 mm length</i>	U201220.13
Profil U 20x15x20x2 mm largeur intérieure 11 mm longueur de 3000 mm <i>U-profile 20x15x20x2 mm 11 mm inside width 3000 mm length</i>	U201520.13
Profil U 20x17x20x2 mm largeur intérieure 13 mm longueur de 3000 mm <i>U-profile 20x17x20x2 mm 13 mm inside width 3000 mm length</i>	U201720.13
Profil U 20x20x20x2 mm largeur intérieure 16 mm longueur de 3000 mm <i>U-profile 20x20x20x2 mm 16 mm inside width 3000 mm length</i>	U202020.13
Profil U 30x20x30x2 mm largeur intérieure 16 mm longueur de 3000 mm <i>U-profile 30x20x30x2 mm 16 mm inside width 3000 mm length</i>	U302030.13
Profil U 40x20x40x2 mm largeur intérieure 16 mm longueur de 3000 mm <i>U-profile 40x20x40x2 mm 16 mm inside width 3000 mm length</i>	U402040.13
Profil L 15x15x2 mm longueur de 3000 mm <i>L-profile 15x15x2 mm 3000 mm length</i>	L1515.13
Profil L 20x20x2 mm longueur de 3000 mm <i>L-profile 20x20x2 mm 3000 mm length</i>	L2020.13
Profil L 25x25x2 mm longueur de 3000mm <i>L-profile 25x25x2 mm 3000 mm length</i>	L2525.13

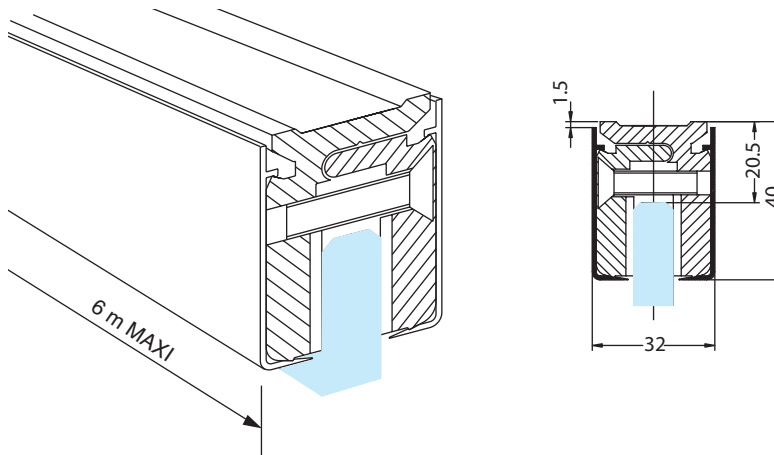
Quantités minimum de commande par référence = 5 longueurs

Quantités de lots par référence = 5 longueurs

Minimum quantity per order and per reference = 5 lengths

Sold in packs per reference = 5 lengths

KL001



Verre suspendu poids maxi : 40 kg par mètre courant
Hanging glass maximum weight : 40 kg per running metre

Références / References



Profil de serrage pour panneaux fixes avec caches, sans encoches (le mètre)
Glass clamp profile incl. covers, no notch (per meter)



Aluminium anodisé Argent Brossé
Brushed anodised alu. silver



Aluminium anodisé Aninox
Brushed anodised alu. aninox



Pour verre de 8 mm
For 8 mm glass

KL001/08.12

KL001/08.36



Pour verre de 10 mm
For 10 mm glass

KL001/10.12

KL001/10.36

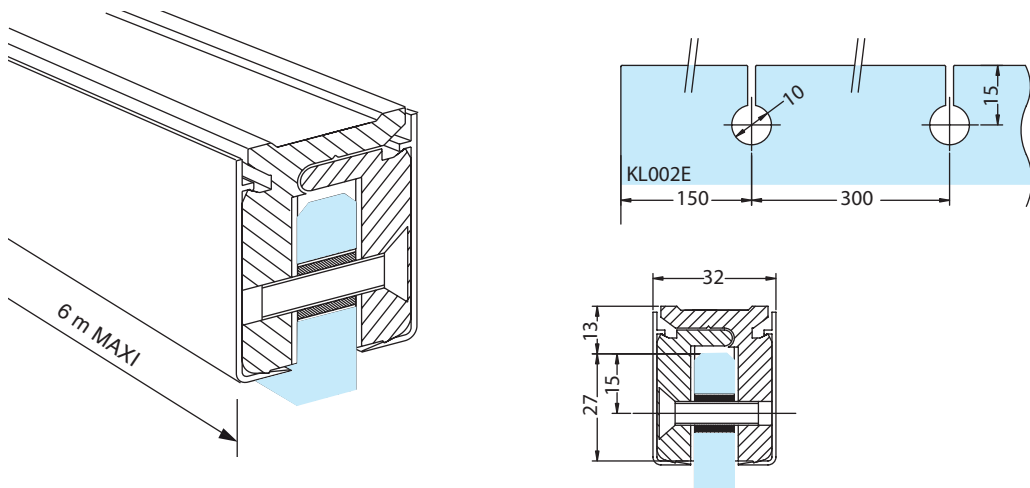


Pour verre de 12 mm
For 12 mm glass

KL001/12.12

KL001/12.36

KL002



Verre suspendu poids maxi : 40 kg par mètre courant (le mètre)
Hanging glass maximum weight : 40 kg per running metre (per meter)

Références / References



Profil de serrage avec caches pour panneaux fixes avec trous (le mètre)
Glass clamp profile incl. covers for glass with holes notches (per meter)



Aluminium anodisé Argent Brossé
Brushed anodised alu. silver



Aluminium anodisé Aninox
Brushed anodised alu. aninox



Pour verre de 8 mm
For 8 mm glass

KL002/08.12

KL002/08.36

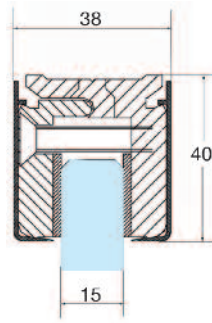
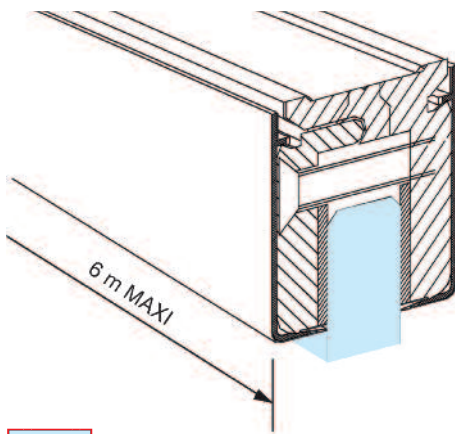


Pour verre de 10 mm
For 10 mm glass

KL002/10.12

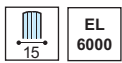
KL002/10.36

KL003



Verre suspendu poids maxi : 40 kg par mètre courant.
Hanging glass maximum weight : 40 kg per running metre

Références / References



Aluminium anodisé Argent Brossé
Brushed anodised alu. silver



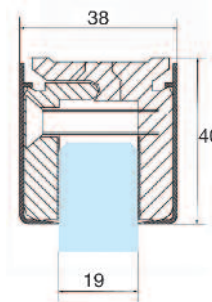
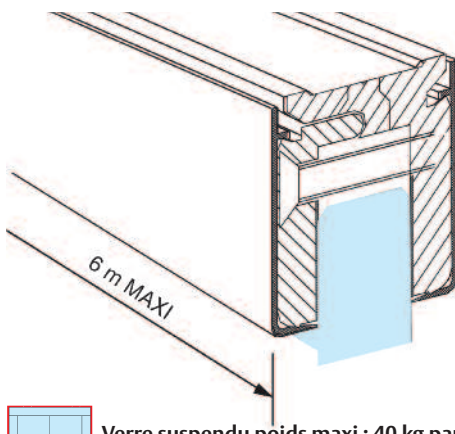
Aluminium anodisé Aninox
Brushed anodised alu. aninox

Profil de serrage pour panneaux fixes avec caches (le mètre)
Glass clamp profile incl. covers (per meter)

KL003.12

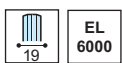
KL003.36

KL005



Verre suspendu poids maxi : 40 kg par mètre courant
Hanging glass maximum weight : 40 kg per running metre

Références / References



Aluminium anodisé Argent Brossé
Brushed anodised alu. silver



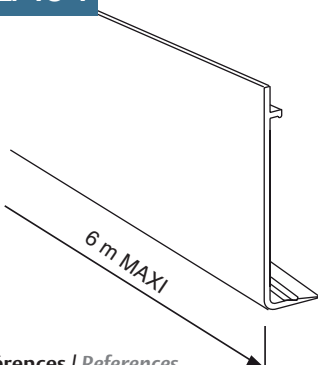
Aluminium anodisé Aninox
Brushed anodised alu. aninox

Profil de serrage pour panneaux fixes avec caches
Glass clamp profile incl. covers

KL005.12

KL005.36

KLA01



Références / References



Caches pour profil de serrage KL001 - KL002 - KL003 - KL005
Covers for glass clamp profile KL001 - KL002 - KL003 - KL005



Aluminium anodisé Argent Brossé
Brushed anodised alu. silver



Aluminium anodisé Aninox
Brushed anodised alu. aninox

KLA01.12

KLA01.36

